



Juno JIRAM

Report JM0580

JIR-IAPS-SY-006-2024

Version 1.0

June 25, 2024

Prepared by:
R. Noschese, A. Cicchetti, R. Sordini

Approved by:
A. Mura

		JIR-IAPS-SY-006-2024		
		Issue	1.0	25/06/2024
	JUNO/JIRAM		Page	2

Table of Contents

1	INTRODUCTION.....	3
2	REFERENCES.....	3
3	ACTIVITY DESCRIPTION.....	3
4	ANOMALIES.....	7
5	RADIATION SEQUENCES.....	8
6	SCIENTIFIC GOALS.....	8
7	DATA COLLECTION OVERVIEW.....	10
	A.1 Commanding file (SASF).....	11

List of Figures

<i>Figure 1:</i>	Simulation with JSPT (JIRAM Software Planning Tool), coverage of the South Pole with filter M. The overlapping yellow strips represent the predicted FOVs.....	4
<i>Figure 2:</i>	Simulation with JSPT. Coverage of the South Pole with filter L, the magenta line represents the theoretical position of the main auroral oval.	5
<i>Figure 3:</i>	Atmospheric Mapping: Hot Spots - Imager filter M.	6
<i>Figure 4:</i>	This is the last image acquired by JIRAM on IO during the JM0580	7
<i>Figure 5:</i>	example of 1 image acquired during the anomaly occurred in JM0580	8

List of Tables

<i>Table 1:</i>	<i>Scientific Goals.</i>	10
<i>Table 2:</i>	<i>Data Overview.</i>	11

		JIR-IAPS-SY-006-2024		
		Issue	1.0	25/06/2024
	JUNO/JIRAM		Page	3

1 INTRODUCTION

This document describes the activities that JIRAM performed during the activity period JM0580 (PJ058), with particular attention to the comparison between the expected and returned data, keeping track of the instrument configuration with the commanding file (SASF).

2 REFERENCES

Adriani A., M.L. Moriconi, A. Mura, F. Tosi, G. Sindoni, R. Noschese, A. Cicchetti, G. Filacchione (2016), Juno's Earth flyby: the Jovian infrared Auroral Mapper preliminary results, 2016. *Astrophys. Space Sci.* <https://doi.org/10.1007/s10509-016-2842-9>

Adriani, A., Filacchione, G., Di Iorio, T., Turrini, D., Noschese, R., Cicchetti, A., Grassi, D., Mura, A., Sindoni, G., Zambelli, M., Piccioni, G., Capria, M. T., Tosi, F., Orosei, R., Dinelli, B. M., Moriconi, M. L., Roncon, E., Lunine, J. I., Becker, H. N., Bini, A., Barbis, A., Calamai, L., Pasqui, C., Nencioni, S., Rossi, M., Lastri, M., Formaro, R., Olivieri, A., 2017. JIRAM, the Jovian Infrared Auroral Mapper. *Space Sci. Rev.* 213, 1–4, pp 393-446. <https://doi.org/10.1007/s11214-014-0094-y>.

Becker, H.N., Alexander, J.W., Adriani, A., Mura, A., Cicchetti, A., Noschese, R., Jørgensen, J.L., Denver, T., Sushkova, J., Jørgensen, A., Benn, M., Connerney, J.E.P., Bolton, S.J., the Selex Galileo Juno SRU Team, Allison, J., Watts, S., Adumitroaie, V., Manor-Chapman, E.A., Daubar, I.J., Lee, C., Kang, S., McAlpine, W.J., Di Iorio, T., Pasqui, C., Barbis, A., Lawton, P., Spalsbury, L., Loftin, S., Sun, J., 2017. The Juno Radiation Monitoring (RM) Investigation. *Space Sci. Rev.* 213, 1-4, pp 507-545. <https://10.1007/s11214-017-0345-9>.

R. Noschese, A. Cicchetti, R. Sordini, M. Cartacci, S. Brooks, M. Lastri, A. Adriani, A. Mura, G. Filacchione, H. Becker, A. Bini, C. Pasqui, A. Migliorini, M.L. Moriconi, D. Grassi, F. Altieri, B.M. Dinelli, G. Piccioni, F. Tosi, D. Turrini, G. Sindoni, A. Olivieri, C. Plainaki. Juno/JIRAM: planning and commanding activities. *Adv. Space Res.* (2019) <https://doi.org/10.1016/j.asr.2019.09.052>

3 ACTIVITY DESCRIPTION

During the JM0580 activity period, JIRAM achieved observations of Jupiter's moon Io (not reported in the figures). Note that there is a spectral observation corresponding to each observation taken with the imager. Details about imager/spectrometer coupling and more generally about the instrument and its performance can be found in Adriani et al. (2017), Noschese et al. (2019).

Due to an uncertainty in the actual pointing of the JIRAM frame (which is affected by the position of the despinning mirror at the time of the observation), the JIRAM team found that the precision of the reconstruction of the geometry of both IMG and SPE pixels should be revised by no less than 0.1 degrees. We want to emphasize that this issue was only discovered during JM0131, when we began conducting systematic limb observations near perijove (PJ) and we could compare the

calculated position of the planet’s limb, using the reconstructed kernels, with respect to its actual position in the image collected with our instrument.

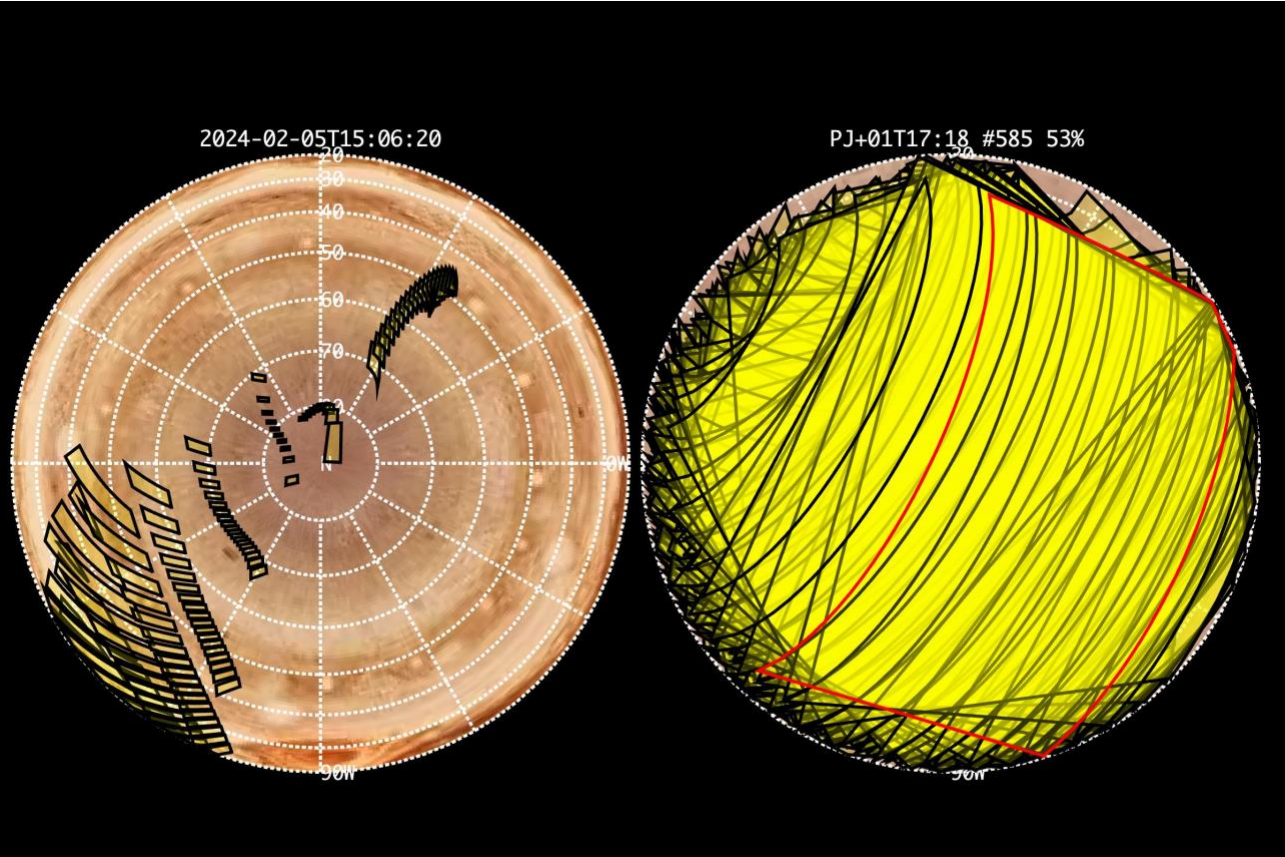


Figure 1: Simulation with JSPT (JIRAM Software Planning Tool), coverage of the South Pole with filter M. The overlapping yellow strips represent the predicted FOVs.

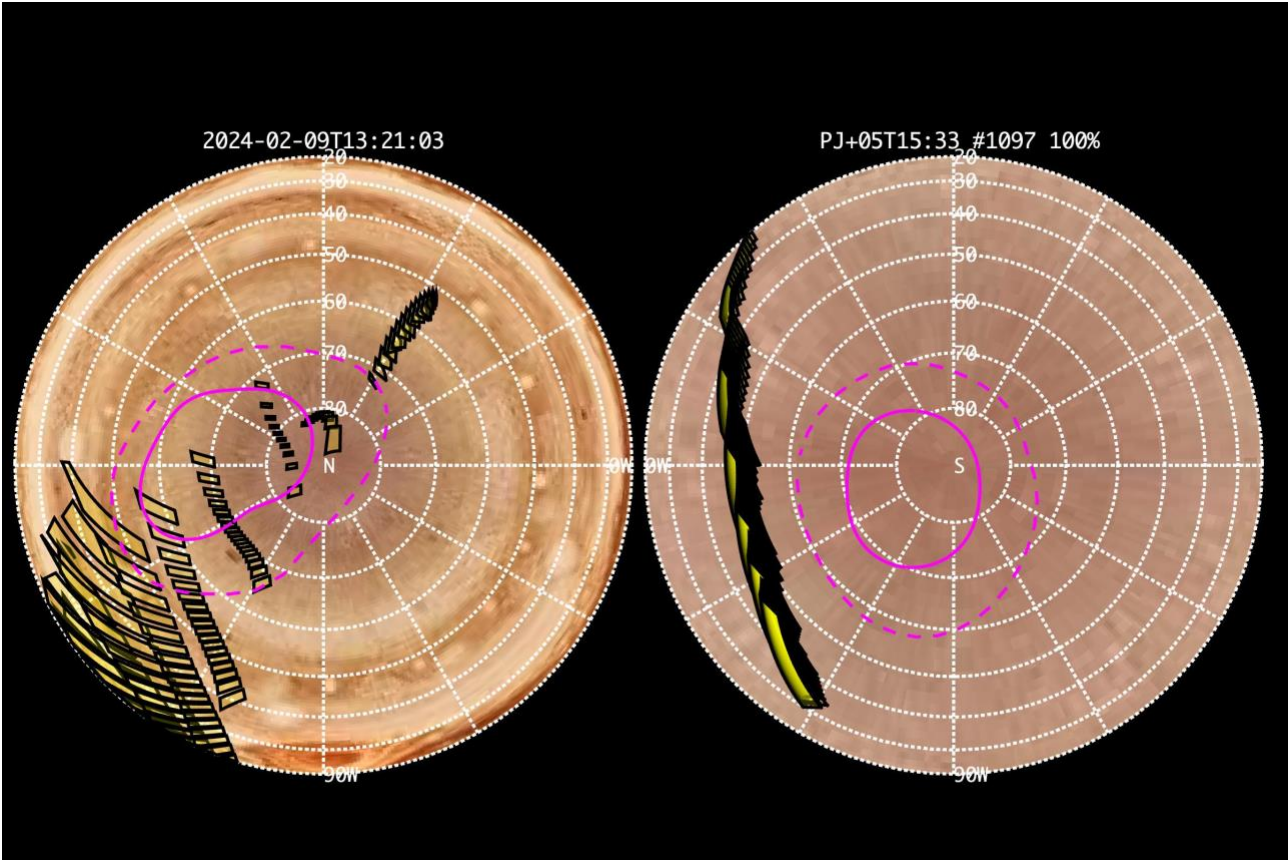


Figure 2: Simulation with JSPT. Coverage of the South Pole with filter L, the magenta line represents the theoretical position of the main auroral oval.

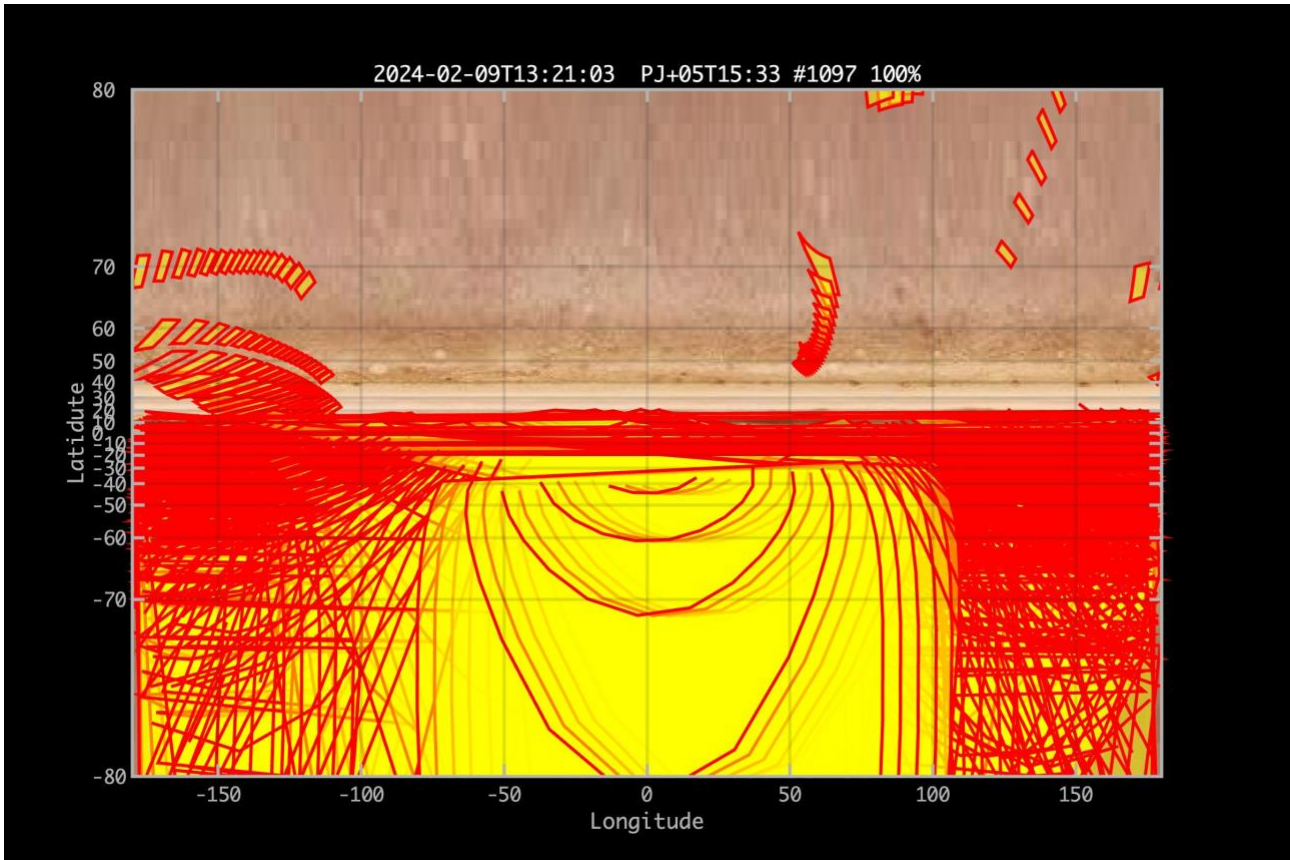


Figure 3: Atmospheric Mapping: Hot Spots - Imager filter M.

4 ANOMALIES

The JIRAM plan for JM0580 was a sequence of 23 images of Io (at PJ-4 hours) and a long campaign of observations of Jupiter, from PJ-2h to PJ+5d 16h. Each day, JIRAM was on for one hour and off for about 23 hours.

JIRAM operated nominally during the observation of Io (**Figure 4**), but when it was turned on at PJ-2h for the observations of Jupiter, an anomaly occurred that prevented the acquisition of scientific data. Specifically, all images contained only random noise in the range between 0 and 50 DN (**Figure 5**).

Additionally, the detector's temperatures were much higher than usual. Due to this anomaly, the plan for JM0590 was aborted and a testing campaign was initiated.

This anomaly ceased without any action from the team, at some unknown time before JM0600.

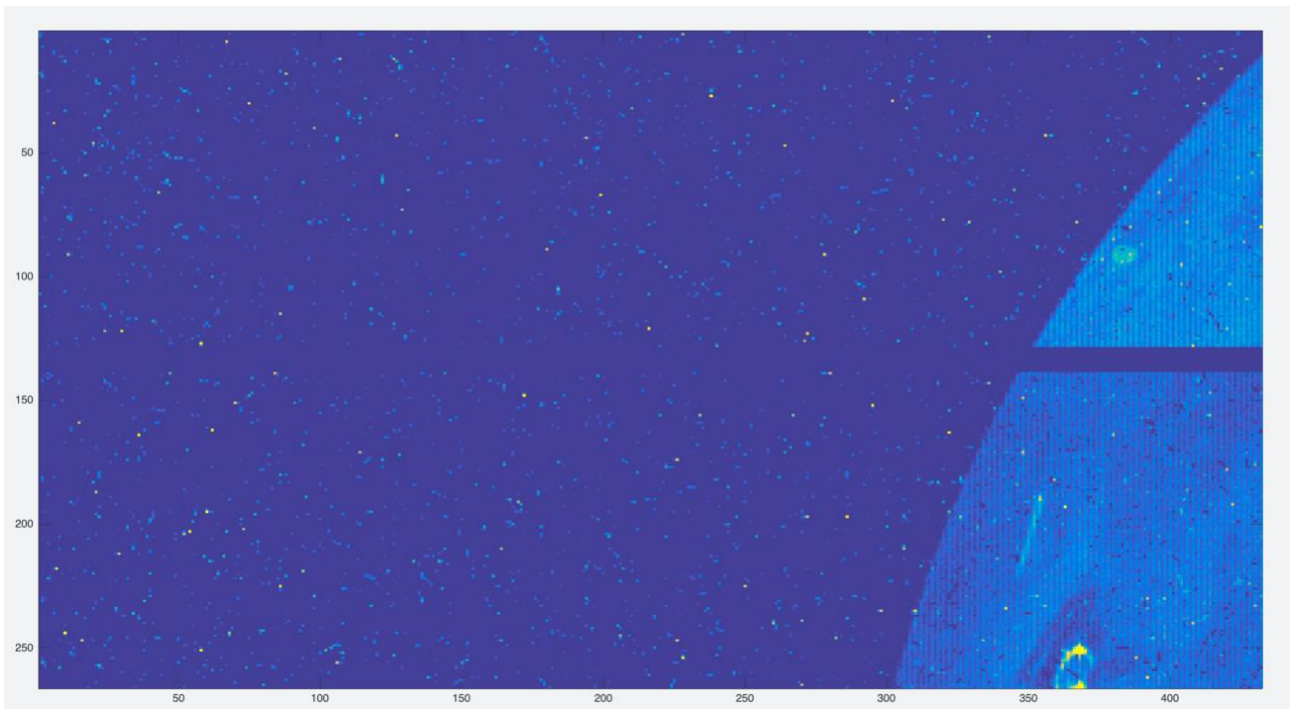


Figure 4: This is the last image acquired by JIRAM on IO during the JM0580

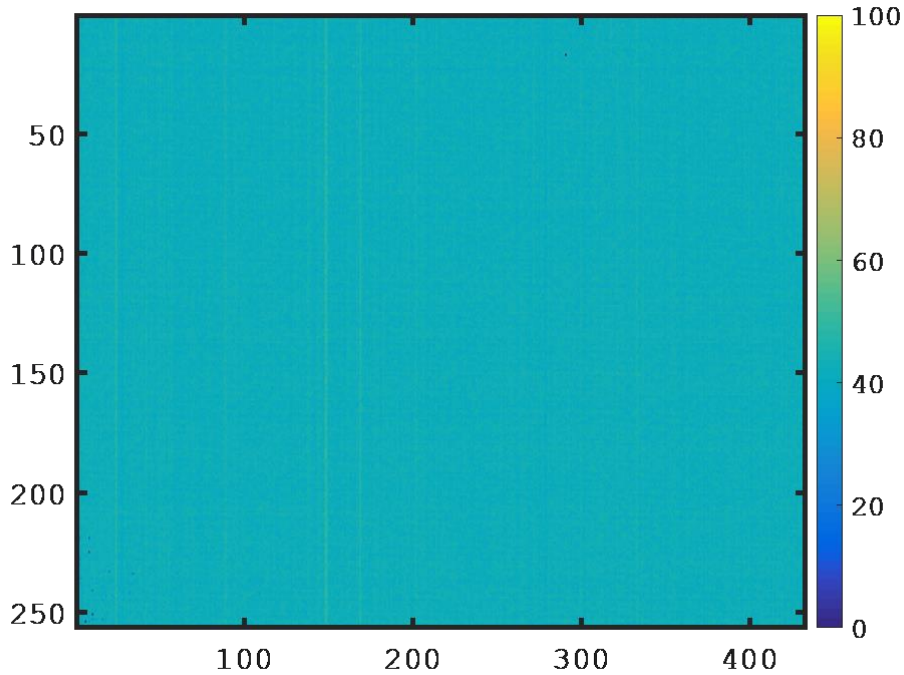


Figure 5: example of 1 image acquired during the anomaly occurred in JM0580

5 RADIATION SEQUENCES

N/A

6 SCIENTIFIC GOALS

Below is a table that describes for each science block in the commanding file the relative operational mode and the scientific objectives. The files relating to the various science blocks are shown in the file “JIR_STATUS_EDR_2024034T174705_V01.CSV” in the INDEX directory.

JRM (saf)	Operational Mode	Goals
JRM_004	SCI_I1_S1	IO
JRM_005	SCI_I1_S3	ATMOSPHERE
JRM_006	SCI_I1_S3	ATMOSPHERE
JRM_007	SCI_I1_S3	ATMOSPHERE
JRM_008	SCI_I1_S3	ATMOSPHERE
JRM_009	SCI_I1_S3	ATMOSPHERE
JRM_010	SCI_I1_S3	ATMOSPHERE
JRM_011	SCI_I1_S3	ATMOSPHERE
JRM_012	SCI_I1_S3	ATMOSPHERE
JRM_013	SCI_I1_S3	ATMOSPHERE
JRM_014	SCI_I1_S3	ATMOSPHERE
JRM_015	SCI_I1_S3	ATMOSPHERE



JUNO/JIRAM

JRM_016	SCI_I1_S1	NORTH POLE
JRM_017	SCI_I1_S1	LIMB UP
JRM_018	SCI_I1_S1	LIMB DOWN
JRM_019	SCI_I1_S1	LIMB DOWN
JRM_020	SCI_I1_S1	LIMB DOWN
JRM_021	SCI_I1_S1	LIMB DOWN
JRM_022	SCI_I1_S1	LIMB DOWN
JRM_023	SCI_I1_S1	LIMB DOWN
JRM_024	SCI_I1_S1	LIMB DOWN
JRM_030	SCI_I2_S3	SOUTH POLE
JRM_031	SCI_I2_S3	SOUTH POLE
JRM_032	SCI_I2_S3	SOUTH POLE
JRM_033	SCI_I2_S3	SOUTH POLE
JRM_034	SCI_I2_S3	SOUTH POLE
JRM_035	SCI_I2_S3	SOUTH POLE
JRM_036	SCI_I2_S3	SOUTH POLE
JRM_037	SCI_I2_S3	SOUTH POLE
JRM_038	SCI_I2_S3	SOUTH POLE
JRM_039	SCI_I2_S3	SOUTH POLE
JRM_040	SCI_I2_S3	SOUTH POLE
JRM_041	SCI_I2_S3	SOUTH POLE
JRM_047	SCI_I2_S3	SOUTH POLE
JRM_048	SCI_I2_S3	SOUTH POLE
JRM_049	SCI_I2_S3	SOUTH POLE
JRM_050	SCI_I2_S3	SOUTH POLE
JRM_051	SCI_I2_S3	SOUTH POLE
JRM_052	SCI_I2_S3	SOUTH POLE
JRM_058	SCI_I2_S3	SOUTH POLE
JRM_059	SCI_I2_S3	SOUTH POLE
JRM_060	SCI_I2_S3	SOUTH POLE
JRM_061	SCI_I2_S3	SOUTH POLE
JRM_062	SCI_I2_S3	SOUTH POLE
JRM_069	SCI_I2_S3	SOUTH POLE
JRM_070	SCI_I2_S3	SOUTH POLE
JRM_071	SCI_I2_S3	SOUTH POLE
JRM_072	SCI_I2_S3	SOUTH POLE
JRM_073	SCI_I2_S3	SOUTH POLE
JRM_074	SCI_I2_S3	SOUTH POLE
JRM_080	SCI_I1_S1	Temperatures Test
JRM_081	SCI_I1_S1	Temperatures Test
JRM_082	SCI_I1_S1	Temperatures Test
JRM_083	SCI_I1_S1	Temperatures Test
JRM_084	SCI_I1_S1	Temperatures Test
JRM_085	SCI_I1_S1	Temperatures Test
JRM_086	SCI_I1_S1	Temperatures Test
JRM_087	SCI_I1_S1	Temperatures Test
JRM_088	SCI_I1_S1	Temperatures Test
JRM_089	SCI_I1_S1	Temperatures Test
JRM_090	SCI_I1_S1	Temperatures Test
JRM_091	SCI_I1_S1	Temperatures Test

Table 1: Scientific Goals.

7 DATA COLLECTION OVERVIEW

Below is a table that provides an overview of the data collected during the activity period JM0580. The table details the programmed operational modes and the data actually collected for each science block in the commanding file.

JRM (sarf)	Operational Mode	Observations	Packets Retrieved	Packets Expected	Missing Observations SPE	Missing Observations IMG
JRM_004	SCI_I1_S1	23 SPE 23 IMG	153	153	0	0
JRM_005	SCI_I1_S3	JIRAM Anomaly				
JRM_006	SCI_I1_S3					
JRM_007	SCI_I1_S3					
JRM_008	SCI_I1_S3					
JRM_009	SCI_I1_S3					
JRM_010	SCI_I1_S3					
JRM_011	SCI_I1_S3					
JRM_012	SCI_I1_S3					
JRM_013	SCI_I1_S3					
JRM_014	SCI_I1_S3					
JRM_015	SCI_I1_S3					
JRM_016	SCI_I1_S1					
JRM_017	SCI_I1_S1					
JRM_018	SCI_I1_S1					
JRM_019	SCI_I1_S1					
JRM_020	SCI_I1_S1					
JRM_021	SCI_I1_S1					
JRM_022	SCI_I1_S1					
JRM_023	SCI_I1_S1					
JRM_024	SCI_I1_S1					
JRM_030	SCI_I2_S3					
JRM_031	SCI_I2_S3					
JRM_032	SCI_I2_S3					
JRM_033	SCI_I2_S3					
JRM_034	SCI_I2_S3					
JRM_035	SCI_I2_S3					
JRM_036	SCI_I2_S3					
JRM_037	SCI_I2_S3					
JRM_038	SCI_I2_S3					
JRM_039	SCI_I2_S3					
JRM_040	SCI_I2_S3					
JRM_041	SCI_I2_S3					
JRM_047	SCI_I2_S3					
JRM_048	SCI_I2_S3					
JRM_049	SCI_I2_S3					
JRM_050	SCI_I2_S3					
JRM_051	SCI_I2_S3					
JRM_052	SCI_I2_S3					
JRM_058	SCI_I2_S3					
JRM_059	SCI_I2_S3					
JRM_060	SCI_I2_S3					
JRM_061	SCI_I2_S3					

		<h1>JIRAM Anomaly</h1>
JRM_062	SCI_I2_S3	
JRM_069	SCI_I2_S3	
JRM_070	SCI_I2_S3	
JRM_071	SCI_I2_S3	
JRM_072	SCI_I2_S3	
JRM_073	SCI_I2_S3	
JRM_074	SCI_I2_S3	
JRM_074	SCI_I2_S3	
JRM_073	SCI_I2_S3	
JRM_074	SCI_I2_S3	
JRM_080	SCI_I1_S1	
JRM_081	SCI_I1_S1	
JRM_082	SCI_I1_S1	
JRM_083	SCI_I1_S1	
JRM_084	SCI_I1_S1	
JRM_085	SCI_I1_S1	
JRM_086	SCI_I1_S1	
JRM_087	SCI_I1_S1	
JRM_088	SCI_I1_S1	
JRM_089	SCI_I1_S1	
JRM_090	SCI_I1_S1	
JRM_091	SCI_I1_S1	

Table 2: Data Overview.

A.1 Commanding file (SASF)

			JIR-IAPS-SY-006-2024	
	Issue	1.0	25/06/2024	
	JUNO/JIRAM		Page	12

```

CCSD3ZF0000100000001NJPL3KS0L015$$MARK$$;
MISSION_NAME = JUNO;
SPACECRAFT_NAME = JUNO;
DATA_SET_ID = SPACECRAFT_ACTIVITY_SEQUENCE_JRM;
FILE_NAME = jm0580_JRMb.sasf;
APPLICABLE_START_TIME = 2024-033T21:00:00.000;
APPLICABLE_STOP_TIME = 2024-066T15:00:00.000;
PRODUCT_CREATION_TIME = 2024-018T00:35:35.000;
PRODUCER_ID = JRMTEAM;
SEQ_ID = jm0580_JRMb;
HOST_ID = JRM_CMD_580_580_V04.jrm;
CCSD3RE00000$$MARK$$NJPL3IFOM01300000001;
$$JNO          SPACECRAFT_ACTIVITY_SEQUENCE_FILE
*****
*PROJECT      JNO
*SPACECRAFT   61
*OPERATOR     JRMTEAM
*FILE_CMPLT   TRUE
*DATE         Wed Jan 17 00:35:35 2024
*BEGIN        2024-033T21:00:00.000
*CUTOFF       2024-066T15:00:00.000
*TITLE        jm0580_JRMb
*EPOCHS_DEF
*jm0580_JRM, 2024-033T21:00:00.000
*EPOCHS_END
*Input files used:
*File Type   Last modified           File name
*PACKETS_NUMBER 7944
*****
$$EOH
$$EOD
request(JRM_Sequence_Management_Request,
        START_TIME,2024-033T21:00:00.000,
        TITLE, "JRM_MAINTENANCE",
        REQUESTOR, "JRMTEAM",
        PROCESSOR, "VC2",
        KEY, "No_Key")

activity(1,
        SCHEDULED_TIME,\00:00:00\,FROM_REQUEST_START,
        SEQTRAN directive
        (VML_START,2001-001T00:00:00.000,2030-
001T00:00:00.000,"ABSLTE","jm0580_JRM","jm0580_JRM.abs","d:/seq")
        ),
        command(2,
        SCHEDULED_TIME,\00:00:30\,FROM_PREVIOUS_START,
        FILE_DELETE("d:/seq/jm0580_JRM.abs")
        ),
        command(3,
        SCHEDULED_TIME,\032T17:59:58\,FROM_REQUEST_START,
        VM_LOAD(20,"d:/seq/jm0590_JRM.abs")
        ),
        end;

request(JRM_001,
        START_TIME,2024-034T06:39:30.000,
        TITLE, "jm0580_JRM_Heater_Op",
        REQUESTOR, "JRMTEAM",
        PROCESSOR, "VC2",
        KEY, "No_Key")
        command(1,
        SCHEDULED_TIME,\00:00:00\,FROM_REQUEST_START,
        THRM_SET_PT_SEL("JIRAM_OH","OPERATIONAL")
        ),
        command(2,
        SCHEDULED_TIME,\00:00:01\,FROM_PREVIOUS_START,
        THRM_SET_PT_SEL("JIRAM_DECON","OPERATIONAL")
        ),
        command(3,
        SCHEDULED_TIME,\03:10:00\,FROM_PREVIOUS_START,
        THRM_SET_PT_SEL("JIRAM_ELECT_BF","OPERATIONAL")

```

			JIR-IAPS-SY-006-2024	
			Issue	1.0
	JUNO/JIRAM		Page	13

```

),
  note(1,
    SCHEDULED_TIME,\00:00:04\,FROM_PREVIOUS_START,
    TEXT,\"NaN\"
  ),
end;

request(JRM_002,
  START_TIME,2024-034T12:00:30.000,
  TITLE, "jm0580_JRM-POWER_ON",
  REQUESTOR, "JRMTEAM",
  PROCESSOR, "VC2",
  KEY, "No_Key")
spawn(1,
  SCHEDULED_TIME,\00:00:00\,FROM_REQUEST_START,
  REQ_ENGINE_ID,21,RT_on_board_block(jiram_pwr_on)
),
  note(1,
    SCHEDULED_TIME,\00:00:04\,FROM_PREVIOUS_START,
    TEXT,\"NaN\"
  ),
end;

request(JRM_003,
  START_TIME,2024-034T12:03:13.000,
  TITLE, "jm0580_JRM_StandBy",
  REQUESTOR, "JRMTEAM",
  PROCESSOR, "VC2",
  KEY, "No_Key")
command(1,
  SCHEDULED_TIME,\00:00:00\,FROM_REQUEST_START,
  JRM_SET_PAR(111,2)
),
command(2,
  SCHEDULED_TIME,\00:00:04\,FROM_PREVIOUS_START,
  JRM_STANDBY("ON","ON","OFF")
),
command(3,
  SCHEDULED_TIME,\00:00:04\,FROM_PREVIOUS_START,

JRM_SCI_PAR("SCI_I2_S3",120,1,10,"IDIS_SDIS","HSSL","ENABLE","DARK","DISABLE",0,956,2,150,"LOW","LOW",
,"POINT",-57343,2,150,"LOW","LOW","SPIN",2294,"NO_SUMMED_SCI")
),
  note(1,
    SCHEDULED_TIME,\00:00:04\,FROM_PREVIOUS_START,
    TEXT,\"NaN\"
  ),
end;

request(JRM_004,
  START_TIME,2024-034T17:46:40.000,
  TITLE, "jm0580_JRM_Science",
  REQUESTOR, "JRMTEAM",
  PROCESSOR, "VC2",
  KEY, "No_Key")
command(1,
  SCHEDULED_TIME,\00:00:00\,FROM_REQUEST_START,
  JRM_SET_PAR(74,2495)
),
command(2,
  SCHEDULED_TIME,\00:00:02\,FROM_PREVIOUS_START,

JRM_SCI_PAR("SCI_I1_S1",23,1,23,"IDIS_SDIS","HSSL","ENABLE","DARK","DISABLE",0,0,10,5000,"LOW","LOW",
,"POINT",28672,10,5000,"LOW","LOW","SPIN",57343,"NO_SUMMED_SCI")
),
command(3,
  SCHEDULED_TIME,\00:00:02\,FROM_PREVIOUS_START,
  JRM_START_HS_REC()
),
command(4,
  SCHEDULED_TIME,\00:00:02\,FROM_PREVIOUS_START,
  JRM_SCIENCE()
),

```


			JIR-IAPS-SY-006-2024	
			Issue	1.0
	JUNO/JIRAM		Page	14

```

command(5,
    SCHEDULED_TIME,\00:12:21\,FROM_PREVIOUS_START,
    JRM_ERROR_LOG()
),
command(6,
    SCHEDULED_TIME,\00:00:02\,FROM_PREVIOUS_START,
    JRM_STOP_HS_REC()
),
note(1,
    SCHEDULED_TIME,\00:00:04\,FROM_PREVIOUS_START,
    TEXT,\"Io\"
),
end;

request(JRM_005,
    START_TIME,2024-034T19:47:10.000,
    TITLE,\"jm0580_JRM_Science\",
    REQUESTOR,\"JRMTEAM\",
    PROCESSOR,\"VC2\",
    KEY,\"No_Key\")
command(1,
    SCHEDULED_TIME,\00:00:00\,FROM_REQUEST_START,
    JRM_SET_PAR(74,2490)
),
command(2,
    SCHEDULED_TIME,\00:00:02\,FROM_PREVIOUS_START,
    JRM_SCI_PAR(\"SCI_I1_S3\",20,1,20,\"IDIS_SDIS\",\"HSSL\",\"ENABLE\",\"DARK\",\"DISABLE\",0,420,20,5000,\"LOW\",\"LOW\",
    \"POINT\",-57343,20,5000,\"LOW\",\"LOW\",\"SPIN\",-1278,\"NO_SUMMED_SCI\")
),
command(3,
    SCHEDULED_TIME,\00:00:02\,FROM_PREVIOUS_START,
    JRM_START_HS_REC()
),
command(4,
    SCHEDULED_TIME,\00:00:02\,FROM_PREVIOUS_START,
    JRM_SCIENCE()
),
command(5,
    SCHEDULED_TIME,\00:10:53\,FROM_PREVIOUS_START,
    JRM_ERROR_LOG()
),
command(6,
    SCHEDULED_TIME,\00:00:02\,FROM_PREVIOUS_START,
    JRM_STOP_HS_REC()
),
note(1,
    SCHEDULED_TIME,\00:00:04\,FROM_PREVIOUS_START,
    TEXT,\"Atmosphere\"
),
end;

request(JRM_006,
    START_TIME,2024-034T19:58:21.000,
    TITLE,\"jm0580_JRM_Science\",
    REQUESTOR,\"JRMTEAM\",
    PROCESSOR,\"VC2\",
    KEY,\"No_Key\")
command(1,
    SCHEDULED_TIME,\00:00:00\,FROM_REQUEST_START,
    JRM_SET_PAR(74,2490)
),
command(2,
    SCHEDULED_TIME,\00:00:02\,FROM_PREVIOUS_START,
    JRM_SCI_PAR(\"SCI_I1_S3\",18,1,18,\"IDIS_SDIS\",\"HSSL\",\"ENABLE\",\"DARK\",\"DISABLE\",0,504,20,5000,\"LOW\",\"LOW\",
    \"POINT\",-57343,20,5000,\"LOW\",\"LOW\",\"SPIN\",-1522,\"NO_SUMMED_SCI\")
),
command(3,
    SCHEDULED_TIME,\00:00:02\,FROM_PREVIOUS_START,
    JRM_START_HS_REC()
),
command(4,

```

			JIR-IAPS-SY-006-2024	
			Issue	1.0
	JUNO/JIRAM		Page	15

```

        SCHEDULED_TIME,\00:00:02\,FROM_PREVIOUS_START,
        JRM_SCIENCE()
    ),
    command(5,
        SCHEDULED_TIME,\00:09:52\,FROM_PREVIOUS_START,
        JRM_ERROR_LOG()
    ),
    command(6,
        SCHEDULED_TIME,\00:00:02\,FROM_PREVIOUS_START,
        JRM_STOP_HS_REC()
    ),
    note(1,
        SCHEDULED_TIME,\00:00:04\,FROM_PREVIOUS_START,
        TEXT,\"Atmosphere\"
    ),
end;

request(JRM_007,
    START_TIME,2024-034T20:08:31.000,
    TITLE,\"jm0580_JRM_Science\",
    REQUESTOR,\"JRMTEAM\",
    PROCESSOR,\"VC2\",
    KEY,\"No_Key\")
    command(1,
        SCHEDULED_TIME,\00:00:00\,FROM_REQUEST_START,
        JRM_SET_PAR(74,2490)
    ),
    command(2,
        SCHEDULED_TIME,\00:00:02\,FROM_PREVIOUS_START,

JRM_SCI_PAR(\"SCI_I1_S3\",18,1,18,\"IDIS_SDIS\",\"HSSL\",\"ENABLE\",\"DARK\",\"DISABLE\",0,544,20,5000,\"LOW\",\"LOW\",
\"POINT\",-57343,20,5000,\"LOW\",\"LOW\",\"SPIN\",-1810,\"NO_SUMMED_SCI\")
    ),
    command(3,
        SCHEDULED_TIME,\00:00:02\,FROM_PREVIOUS_START,
        JRM_START_HS_REC()
    ),
    command(4,
        SCHEDULED_TIME,\00:00:02\,FROM_PREVIOUS_START,
        JRM_SCIENCE()
    ),
    command(5,
        SCHEDULED_TIME,\00:09:52\,FROM_PREVIOUS_START,
        JRM_ERROR_LOG()
    ),
    command(6,
        SCHEDULED_TIME,\00:00:02\,FROM_PREVIOUS_START,
        JRM_STOP_HS_REC()
    ),
    note(1,
        SCHEDULED_TIME,\00:00:04\,FROM_PREVIOUS_START,
        TEXT,\"Atmosphere\"
    ),
end;

request(JRM_008,
    START_TIME,2024-034T20:18:42.000,
    TITLE,\"jm0580_JRM_Science\",
    REQUESTOR,\"JRMTEAM\",
    PROCESSOR,\"VC2\",
    KEY,\"No_Key\")
    command(1,
        SCHEDULED_TIME,\00:00:00\,FROM_REQUEST_START,
        JRM_SET_PAR(74,2490)
    ),
    command(2,
        SCHEDULED_TIME,\00:00:02\,FROM_PREVIOUS_START,

JRM_SCI_PAR(\"SCI_I1_S3\",18,1,18,\"IDIS_SDIS\",\"HSSL\",\"ENABLE\",\"DARK\",\"DISABLE\",0,596,20,5000,\"LOW\",\"LOW\",
\"POINT\",-57343,20,5000,\"LOW\",\"LOW\",\"SPIN\",-2163,\"NO_SUMMED_SCI\")
    ),
    command(3,
        SCHEDULED_TIME,\00:00:02\,FROM_PREVIOUS_START,

```

			JIR-IAPS-SY-006-2024	
			Issue	1.0
	JUNO/JIRAM		Page	16

```

        JRM_START_HS_REC ()
    ),
    command(4,
        SCHEDULED_TIME,\00:00:02\,FROM_PREVIOUS_START,
        JRM_SCIENCE ()
    ),
    command(5,
        SCHEDULED_TIME,\00:09:51\,FROM_PREVIOUS_START,
        JRM_ERROR_LOG ()
    ),
    command(6,
        SCHEDULED_TIME,\00:00:02\,FROM_PREVIOUS_START,
        JRM_STOP_HS_REC ()
    ),
    note(1,
        SCHEDULED_TIME,\00:00:04\,FROM_PREVIOUS_START,
        TEXT,\"Atmosphere\"
    ),
end;

request (JRM_009,
    START_TIME,2024-034T20:28:52.000,
    TITLE, "jm0580_JRM_Science",
    REQUESTOR, "JRMTEAM",
    PROCESSOR, "VC2",
    KEY, "No_Key")
    command(1,
        SCHEDULED_TIME,\00:00:00\,FROM_REQUEST_START,
        JRM_SET_PAR(74,2490)
    ),
    command(2,
        SCHEDULED_TIME,\00:00:02\,FROM_PREVIOUS_START,
        JRM_SCI_PAR("SCI_I1_S3",18,1,18,"IDIS_SDIS","HSSL","ENABLE","DARK","DISABLE",0,656,20,5000,"LOW","LOW",
        "POINT",-57343,20,5000,"LOW","LOW","SPIN",-2580,"NO_SUMMED_SCI")
    ),
    command(3,
        SCHEDULED_TIME,\00:00:02\,FROM_PREVIOUS_START,
        JRM_START_HS_REC ()
    ),
    command(4,
        SCHEDULED_TIME,\00:00:02\,FROM_PREVIOUS_START,
        JRM_SCIENCE ()
    ),
    command(5,
        SCHEDULED_TIME,\00:09:52\,FROM_PREVIOUS_START,
        JRM_ERROR_LOG ()
    ),
    command(6,
        SCHEDULED_TIME,\00:00:02\,FROM_PREVIOUS_START,
        JRM_STOP_HS_REC ()
    ),
    note(1,
        SCHEDULED_TIME,\00:00:04\,FROM_PREVIOUS_START,
        TEXT,\"Atmosphere\"
    ),
end;

request (JRM_010,
    START_TIME,2024-034T20:39:02.000,
    TITLE, "jm0580_JRM_Science",
    REQUESTOR, "JRMTEAM",
    PROCESSOR, "VC2",
    KEY, "No_Key")
    command(1,
        SCHEDULED_TIME,\00:00:00\,FROM_REQUEST_START,
        JRM_SET_PAR(74,2490)
    ),
    command(2,
        SCHEDULED_TIME,\00:00:02\,FROM_PREVIOUS_START,
        JRM_SCI_PAR("SCI_I1_S3",18,1,18,"IDIS_SDIS","HSSL","ENABLE","DARK","DISABLE",0,733,20,5000,"LOW","LOW",
        "POINT",-57343,20,5000,"LOW","LOW","SPIN",-3098,"NO_SUMMED_SCI")
    )

```

			JIR-IAPS-SY-006-2024	
			Issue	1.0
	JUNO/JIRAM		Page	17

```

),
command(3,
  SCHEDULED_TIME,\00:00:02\,FROM_PREVIOUS_START,
  JRM_START_HS_REC()
),
command(4,
  SCHEDULED_TIME,\00:00:02\,FROM_PREVIOUS_START,
  JRM_SCIENCE()
),
command(5,
  SCHEDULED_TIME,\00:09:53\,FROM_PREVIOUS_START,
  JRM_ERROR_LOG()
),
command(6,
  SCHEDULED_TIME,\00:00:02\,FROM_PREVIOUS_START,
  JRM_STOP_HS_REC()
),
note(1,
  SCHEDULED_TIME,\00:00:04\,FROM_PREVIOUS_START,
  TEXT,\"Atmosphere\"
),
end;

request(JRM_011,
  START_TIME,2024-034T20:49:13.000,
  TITLE,\"jm0580_JRM_Science\",
  REQUESTOR,\"JRMTEAM\",
  PROCESSOR,\"VC2\",
  KEY,\"No_Key\")
command(1,
  SCHEDULED_TIME,\00:00:00\,FROM_REQUEST_START,
  JRM_SET_PAR(74,2490)
),
command(2,
  SCHEDULED_TIME,\00:00:02\,FROM_PREVIOUS_START,
  JRM_SCI_PAR(\"SCI_I1_S3\",18,1,18,\"IDIS_SDIS\",\"HSSL\",\"ENABLE\",\"DARK\",\"DISABLE\",0,834,20,5000,\"LOW\",\"LOW\",
  \"POINT\",-57343,20,5000,\"LOW\",\"LOW\",\"SPIN\",-3758,\"NO_SUMMED_SCI\")
),
command(3,
  SCHEDULED_TIME,\00:00:02\,FROM_PREVIOUS_START,
  JRM_START_HS_REC()
),
command(4,
  SCHEDULED_TIME,\00:00:02\,FROM_PREVIOUS_START,
  JRM_SCIENCE()
),
command(5,
  SCHEDULED_TIME,\00:09:53\,FROM_PREVIOUS_START,
  JRM_ERROR_LOG()
),
command(6,
  SCHEDULED_TIME,\00:00:02\,FROM_PREVIOUS_START,
  JRM_STOP_HS_REC()
),
note(1,
  SCHEDULED_TIME,\00:00:04\,FROM_PREVIOUS_START,
  TEXT,\"Atmosphere\"
),
end;

request(JRM_012,
  START_TIME,2024-034T20:59:24.000,
  TITLE,\"jm0580_JRM_Science\",
  REQUESTOR,\"JRMTEAM\",
  PROCESSOR,\"VC2\",
  KEY,\"No_Key\")
command(1,
  SCHEDULED_TIME,\00:00:00\,FROM_REQUEST_START,
  JRM_SET_PAR(74,2490)
),
command(2,
  SCHEDULED_TIME,\00:00:02\,FROM_PREVIOUS_START,

```

			JIR-IAPS-SY-006-2024	
			Issue	1.0
	JUNO/JIRAM		Page	18

```
JRM_SCI_PAR("SCI_I1_S3",18,1,18,"IDIS_SDIS","HSSL","ENABLE","DARK","DISABLE",0,968,20,5000,"LOW","LOW",
"POINT",-57343,20,5000,"LOW","LOW","SPIN",-4628,"NO_SUMMED_SCI")
),
command(3,
SCHEDULED_TIME,\00:00:02\,FROM_PREVIOUS_START,
JRM_START_HS_REC()
),
command(4,
SCHEDULED_TIME,\00:00:02\,FROM_PREVIOUS_START,
JRM_SCIENCE()
),
command(5,
SCHEDULED_TIME,\00:09:54\,FROM_PREVIOUS_START,
JRM_ERROR_LOG()
),
command(6,
SCHEDULED_TIME,\00:00:02\,FROM_PREVIOUS_START,
JRM_STOP_HS_REC()
),
note(1,
SCHEDULED_TIME,\00:00:04\,FROM_PREVIOUS_START,
TEXT,\"Atmosphere\"
),
end;

request(JRM_013,
START_TIME,2024-034T21:09:35.000,
TITLE,\"jm0580_JRM_Science\",
REQUESTOR,\"JRMTEAM\",
PROCESSOR,\"VC2\",
KEY,\"No_Key\")
command(1,
SCHEDULED_TIME,\00:00:00\,FROM_REQUEST_START,
JRM_SET_PAR(74,2490)
),
command(2,
SCHEDULED_TIME,\00:00:02\,FROM_PREVIOUS_START,

JRM_SCI_PAR("SCI_I1_S3",18,1,18,"IDIS_SDIS","HSSL","ENABLE","DARK","DISABLE",0,1150,20,5000,"LOW","LOW",
"POINT",-57343,20,5000,"LOW","LOW","SPIN",-5799,"NO_SUMMED_SCI")
),
command(3,
SCHEDULED_TIME,\00:00:02\,FROM_PREVIOUS_START,
JRM_START_HS_REC()
),
command(4,
SCHEDULED_TIME,\00:00:02\,FROM_PREVIOUS_START,
JRM_SCIENCE()
),
command(5,
SCHEDULED_TIME,\00:09:55\,FROM_PREVIOUS_START,
JRM_ERROR_LOG()
),
command(6,
SCHEDULED_TIME,\00:00:02\,FROM_PREVIOUS_START,
JRM_STOP_HS_REC()
),
note(1,
SCHEDULED_TIME,\00:00:04\,FROM_PREVIOUS_START,
TEXT,\"Atmosphere\"
),
end;

request(JRM_014,
START_TIME,2024-034T21:19:46.000,
TITLE,\"jm0580_JRM_Science\",
REQUESTOR,\"JRMTEAM\",
PROCESSOR,\"VC2\",
KEY,\"No_Key\")
command(1,
SCHEDULED_TIME,\00:00:00\,FROM_REQUEST_START,
JRM_SET_PAR(74,2490)
```


			JIR-IAPS-SY-006-2024		
			Issue	1.0	25/06/2024
	JUNO/JIRAM		Page	19	of 54

```

),
command(2,
    SCHEDULED_TIME,\00:00:02\,FROM_PREVIOUS_START,
JRM_SCI_PAR("SCI_I1_S3",18,1,18,"IDIS_SDIS","HSSL","ENABLE","DARK","DISABLE",0,1401,20,5000,"LOW","LOW",
"POINT",-57343,20,5000,"LOW","LOW","SPIN",-7419,"NO_SUMMED_SCI")
),
command(3,
    SCHEDULED_TIME,\00:00:02\,FROM_PREVIOUS_START,
    JRM_START_HS_REC()
),
command(4,
    SCHEDULED_TIME,\00:00:02\,FROM_PREVIOUS_START,
    JRM_SCIENCE()
),
command(5,
    SCHEDULED_TIME,\00:09:57\,FROM_PREVIOUS_START,
    JRM_ERROR_LOG()
),
command(6,
    SCHEDULED_TIME,\00:00:02\,FROM_PREVIOUS_START,
    JRM_STOP_HS_REC()
),
note(1,
    SCHEDULED_TIME,\00:00:04\,FROM_PREVIOUS_START,
    TEXT,\"Atmosphere\"
),
end;

request(JRM_015,
    START_TIME,2024-034T21:29:57.000,
    TITLE,"jm0580_JRM_Science",
    REQUESTOR,"JRMTEAM",
    PROCESSOR,"VC2",
    KEY,"No_Key")
command(1,
    SCHEDULED_TIME,\00:00:00\,FROM_REQUEST_START,
    JRM_SET_PAR(74,2490)
),
command(2,
    SCHEDULED_TIME,\00:00:02\,FROM_PREVIOUS_START,
JRM_SCI_PAR("SCI_I1_S3",10,1,10,"IDIS_SDIS","HSSL","ENABLE","DARK","DISABLE",0,3103,20,5000,"LOW","LOW",
"POINT",-57343,20,5000,"LOW","LOW","SPIN",-9632,"NO_SUMMED_SCI")
),
command(3,
    SCHEDULED_TIME,\00:00:02\,FROM_PREVIOUS_START,
    JRM_START_HS_REC()
),
command(4,
    SCHEDULED_TIME,\00:00:02\,FROM_PREVIOUS_START,
    JRM_SCIENCE()
),
command(5,
    SCHEDULED_TIME,\00:05:54\,FROM_PREVIOUS_START,
    JRM_ERROR_LOG()
),
command(6,
    SCHEDULED_TIME,\00:00:02\,FROM_PREVIOUS_START,
    JRM_STOP_HS_REC()
),
note(1,
    SCHEDULED_TIME,\00:00:04\,FROM_PREVIOUS_START,
    TEXT,\"Atmosphere\"
),
end;

request(JRM_016,
    START_TIME,2024-034T21:36:04.000,
    TITLE,"jm0580_JRM_Science",
    REQUESTOR,"JRMTEAM",
    PROCESSOR,"VC2",
    KEY,"No_Key")

```

			JIR-IAPS-SY-006-2024	
			Issue	1.0
	JUNO/JIRAM		Page	20

```

command(1,
    SCHEDULED_TIME,\00:00:00\,FROM_REQUEST_START,
    JRM_SET_PAR(74,2490)
),
command(2,
    SCHEDULED_TIME,\00:00:02\,FROM_PREVIOUS_START,

JRM_SCI_PAR("SCI_I1_S1",16,1,16,"IDIS_SDIS","HSSL","ENABLE","DARK","DISABLE",0,948,20,5000,"LOW","LOW",
"POINT",-57343,20,5000,"LOW","LOW","SPIN",14095,"NO_SUMMED_SCI")
),
command(3,
    SCHEDULED_TIME,\00:00:02\,FROM_PREVIOUS_START,
    JRM_START_HS_REC()
),
command(4,
    SCHEDULED_TIME,\00:00:02\,FROM_PREVIOUS_START,
    JRM_SCIENCE()
),
command(5,
    SCHEDULED_TIME,\00:08:53\,FROM_PREVIOUS_START,
    JRM_ERROR_LOG()
),
command(6,
    SCHEDULED_TIME,\00:00:02\,FROM_PREVIOUS_START,
    JRM_STOP_HS_REC()
),
note(1,
    SCHEDULED_TIME,\00:00:04\,FROM_PREVIOUS_START,
    TEXT,\"North Pole\"
),
end;

request(JRM_017,
    START_TIME,2024-034T21:45:15.000,
    TITLE, "jm0580_JRM_Science",
    REQUESTOR, "JRMTEAM",
    PROCESSOR, "VC2",
    KEY, "No_Key")

command(1,
    SCHEDULED_TIME,\00:00:00\,FROM_REQUEST_START,
    JRM_SET_PAR(74,2490)
),
command(2,
    SCHEDULED_TIME,\00:00:02\,FROM_PREVIOUS_START,

JRM_SCI_PAR("SCI_I1_S1",22,1,22,"IDIS_SDIS","HSSL","ENABLE","DARK","DISABLE",0,0,20,5000,"LOW","LOW",
"POINT",-57343,20,5000,"LOW","LOW","SPIN",23420,"NO_SUMMED_SCI")
),
command(3,
    SCHEDULED_TIME,\00:00:02\,FROM_PREVIOUS_START,
    JRM_START_HS_REC()
),
command(4,
    SCHEDULED_TIME,\00:00:02\,FROM_PREVIOUS_START,
    JRM_SCIENCE()
),
command(5,
    SCHEDULED_TIME,\00:11:53\,FROM_PREVIOUS_START,
    JRM_ERROR_LOG()
),
command(6,
    SCHEDULED_TIME,\00:00:02\,FROM_PREVIOUS_START,
    JRM_STOP_HS_REC()
),
note(1,
    SCHEDULED_TIME,\00:00:04\,FROM_PREVIOUS_START,
    TEXT,\"Limb Up\"
),
end;

request(JRM_018,
    START_TIME,2024-034T21:57:30.000,
    TITLE, "jm0580_JRM_Science",

```

			JIR-IAPS-SY-006-2024	
			Issue	1.0
	JUNO/JIRAM		Page	21

```

REQUESTOR, "JRMTEAM",
PROCESSOR, "VC2",
KEY, "No_Key")
command(1,
  SCHEDULED_TIME, \00:00:00\, FROM_REQUEST_START,
  JRM_SET_PAR(74,2490)
),
command(2,
  SCHEDULED_TIME, \00:00:02\, FROM_PREVIOUS_START,

JRM_SCI_PAR("SCI_I1_S1",12,1,12,"IDIS_SDIS","HSSL","ENABLE","DARK","DISABLE",0,333,20,5000,"LOW","LOW",
"POINT",-57343,20,5000,"LOW","LOW","SPIN",-18808,"NO_SUMMED_SCI")
),
command(3,
  SCHEDULED_TIME, \00:00:02\, FROM_PREVIOUS_START,
  JRM_START_HS_REC()
),
command(4,
  SCHEDULED_TIME, \00:00:02\, FROM_PREVIOUS_START,
  JRM_SCIENCE()
),
command(5,
  SCHEDULED_TIME, \00:06:47\, FROM_PREVIOUS_START,
  JRM_ERROR_LOG()
),
command(6,
  SCHEDULED_TIME, \00:00:02\, FROM_PREVIOUS_START,
  JRM_STOP_HS_REC()
),
note(1,
  SCHEDULED_TIME, \00:00:04\, FROM_PREVIOUS_START,
  TEXT, \Limb Down"\
),
end;

request(JRM_019,
  START_TIME,2024-034T22:04:38.000,
  TITLE, "jm0580_JRM_Science",
  REQUESTOR, "JRMTEAM",
  PROCESSOR, "VC2",
  KEY, "No_Key")
command(1,
  SCHEDULED_TIME, \00:00:00\, FROM_REQUEST_START,
  JRM_SET_PAR(74,2490)
),
command(2,
  SCHEDULED_TIME, \00:00:02\, FROM_PREVIOUS_START,

JRM_SCI_PAR("SCI_I1_S1",12,1,12,"IDIS_SDIS","HSSL","ENABLE","DARK","DISABLE",0,317,20,5000,"LOW","LOW",
"POINT",-57343,20,5000,"LOW","LOW","SPIN",-15014,"NO_SUMMED_SCI")
),
command(3,
  SCHEDULED_TIME, \00:00:02\, FROM_PREVIOUS_START,
  JRM_START_HS_REC()
),
command(4,
  SCHEDULED_TIME, \00:00:02\, FROM_PREVIOUS_START,
  JRM_SCIENCE()
),
command(5,
  SCHEDULED_TIME, \00:06:48\, FROM_PREVIOUS_START,
  JRM_ERROR_LOG()
),
command(6,
  SCHEDULED_TIME, \00:00:02\, FROM_PREVIOUS_START,
  JRM_STOP_HS_REC()
),
note(1,
  SCHEDULED_TIME, \00:00:04\, FROM_PREVIOUS_START,
  TEXT, \Limb Down"\
),
end;

```

			JIR-IAPS-SY-006-2024		
			Issue	1.0	25/06/2024
	JUNO/JIRAM		Page	22	of 54

```

request (JRM_020,
    START_TIME,2024-034T22:11:46.000,
    TITLE, "jm0580_JRM_Science",
    REQUESTOR, "JRMTEAM",
    PROCESSOR, "VC2",
    KEY, "No_Key")
    command(1,
        SCHEDULED_TIME,\00:00:00\,FROM_REQUEST_START,
        JRM_SET_PAR(74,2490)
    ),
    command(2,
        SCHEDULED_TIME,\00:00:02\,FROM_PREVIOUS_START,

JRM_SCI_PAR("SCI_I1_S1",12,1,12,"IDIS_SDIS","HSSL","ENABLE","DARK","DISABLE",0,249,20,5000,"LOW","LOW",
"POINT",-57343,20,5000,"LOW","LOW","SPIN",-11523,"NO_SUMMED_SCI")
    ),
    command(3,
        SCHEDULED_TIME,\00:00:02\,FROM_PREVIOUS_START,
        JRM_START_HS_REC()
    ),
    command(4,
        SCHEDULED_TIME,\00:00:02\,FROM_PREVIOUS_START,
        JRM_SCIENCE()
    ),
    command(5,
        SCHEDULED_TIME,\00:06:48\,FROM_PREVIOUS_START,
        JRM_ERROR_LOG()
    ),
    command(6,
        SCHEDULED_TIME,\00:00:02\,FROM_PREVIOUS_START,
        JRM_STOP_HS_REC()
    ),
    note(1,
        SCHEDULED_TIME,\00:00:04\,FROM_PREVIOUS_START,
        TEXT,\"Limb Down\"
    ),
end;

request (JRM_021,
    START_TIME,2024-034T22:18:54.000,
    TITLE, "jm0580_JRM_Science",
    REQUESTOR, "JRMTEAM",
    PROCESSOR, "VC2",
    KEY, "No_Key")
    command(1,
        SCHEDULED_TIME,\00:00:00\,FROM_REQUEST_START,
        JRM_SET_PAR(74,2490)
    ),
    command(2,
        SCHEDULED_TIME,\00:00:02\,FROM_PREVIOUS_START,

JRM_SCI_PAR("SCI_I1_S1",12,1,12,"IDIS_SDIS","HSSL","ENABLE","DARK","DISABLE",0,191,20,5000,"LOW","LOW",
"POINT",-57343,20,5000,"LOW","LOW","SPIN",-8866,"NO_SUMMED_SCI")
    ),
    command(3,
        SCHEDULED_TIME,\00:00:02\,FROM_PREVIOUS_START,
        JRM_START_HS_REC()
    ),
    command(4,
        SCHEDULED_TIME,\00:00:02\,FROM_PREVIOUS_START,
        JRM_SCIENCE()
    ),
    command(5,
        SCHEDULED_TIME,\00:06:47\,FROM_PREVIOUS_START,
        JRM_ERROR_LOG()
    ),
    command(6,
        SCHEDULED_TIME,\00:00:02\,FROM_PREVIOUS_START,
        JRM_STOP_HS_REC()
    ),
    note(1,
        SCHEDULED_TIME,\00:00:04\,FROM_PREVIOUS_START,
        TEXT,\"Limb Down\"
    )

```

			JIR-IAPS-SY-006-2024	
			Issue	1.0
	JUNO/JIRAM		Page	23

```

),
end;

request (JRM_022,
        START_TIME,2024-034T22:26:02.000,
        TITLE, "jm0580_JRM_Science",
        REQUESTOR, "JRMTEAM",
        PROCESSOR, "VC2",
        KEY, "No_Key")
  command(1,
          SCHEDULED_TIME,\00:00:00\,FROM_REQUEST_START,
          JRM_SET_PAR(74,2490)
        ),
  command(2,
          SCHEDULED_TIME,\00:00:02\,FROM_PREVIOUS_START,

JRM_SCI_PAR("SCI_I1_S1",12,1,12,"IDIS_SDIS","HSSL","ENABLE","DARK","DISABLE",0,153,20,5000,"LOW","LOW",
"POINT",-57343,20,5000,"LOW","LOW","SPIN",-6884,"NO_SUMMED_SCI")
        ),
  command(3,
          SCHEDULED_TIME,\00:00:02\,FROM_PREVIOUS_START,
          JRM_START_HS_REC()
        ),
  command(4,
          SCHEDULED_TIME,\00:00:02\,FROM_PREVIOUS_START,
          JRM_SCIENCE()
        ),
  command(5,
          SCHEDULED_TIME,\00:06:47\,FROM_PREVIOUS_START,
          JRM_ERROR_LOG()
        ),
  command(6,
          SCHEDULED_TIME,\00:00:02\,FROM_PREVIOUS_START,
          JRM_STOP_HS_REC()
        ),
  note(1,
        SCHEDULED_TIME,\00:00:04\,FROM_PREVIOUS_START,
        TEXT,\\"Limb Down"\
        ),
end;

request (JRM_023,
        START_TIME,2024-034T22:33:10.000,
        TITLE, "jm0580_JRM_Science",
        REQUESTOR, "JRMTEAM",
        PROCESSOR, "VC2",
        KEY, "No_Key")
  command(1,
          SCHEDULED_TIME,\00:00:00\,FROM_REQUEST_START,
          JRM_SET_PAR(74,2490)
        ),
  command(2,
          SCHEDULED_TIME,\00:00:02\,FROM_PREVIOUS_START,

JRM_SCI_PAR("SCI_I1_S1",12,1,12,"IDIS_SDIS","HSSL","ENABLE","DARK","DISABLE",0,127,20,5000,"LOW","LOW",
"POINT",-57343,20,5000,"LOW","LOW","SPIN",-5338,"NO_SUMMED_SCI")
        ),
  command(3,
          SCHEDULED_TIME,\00:00:02\,FROM_PREVIOUS_START,
          JRM_START_HS_REC()
        ),
  command(4,
          SCHEDULED_TIME,\00:00:02\,FROM_PREVIOUS_START,
          JRM_SCIENCE()
        ),
  command(5,
          SCHEDULED_TIME,\00:06:47\,FROM_PREVIOUS_START,
          JRM_ERROR_LOG()
        ),
  command(6,
          SCHEDULED_TIME,\00:00:02\,FROM_PREVIOUS_START,
          JRM_STOP_HS_REC()
        ),
),

```


			JIR-IAPS-SY-006-2024	
			Issue	1.0
	JUNO/JIRAM		Page	24

```

        note(1,
            SCHEDULED_TIME,\00:00:04\,FROM_PREVIOUS_START,
            TEXT,\"Limb Down\"
        ),
end;

request(JRM_024,
    START_TIME,2024-034T22:40:17.000,
    TITLE, "jm0580_JRM_Science",
    REQUESTOR, "JRMTEAM",
    PROCESSOR, "VC2",
    KEY, "No_Key")
    command(1,
        SCHEDULED_TIME,\00:00:00\,FROM_REQUEST_START,
        JRM_SET_PAR(74,2490)
    ),
    command(2,
        SCHEDULED_TIME,\00:00:02\,FROM_PREVIOUS_START,
JRM_SCI_PAR("SCI_I1_S1",12,1,12,"IDIS_SDIS","HSSL","ENABLE","DARK","DISABLE",0,110,20,5000,"LOW","LOW",
"POINT",-57343,20,5000,"LOW","LOW","SPIN",-4091,"NO_SUMMED_SCI")
    ),
    command(3,
        SCHEDULED_TIME,\00:00:02\,FROM_PREVIOUS_START,
        JRM_START_HS_REC()
    ),
    command(4,
        SCHEDULED_TIME,\00:00:02\,FROM_PREVIOUS_START,
        JRM_SCIENCE()
    ),
    command(5,
        SCHEDULED_TIME,\00:06:47\,FROM_PREVIOUS_START,
        JRM_ERROR_LOG()
    ),
    command(6,
        SCHEDULED_TIME,\00:00:02\,FROM_PREVIOUS_START,
        JRM_STOP_HS_REC()
    ),
    note(1,
        SCHEDULED_TIME,\00:00:04\,FROM_PREVIOUS_START,
        TEXT,\"Limb Down\"
    ),
end;

request(JRM_025,
    START_TIME,2024-034T22:47:16.000,
    TITLE, "jm0580_JRM-POWER_OFF",
    REQUESTOR, "JRMTEAM",
    PROCESSOR, "VC2",
    KEY, "No_Key")
    command(1,
        SCHEDULED_TIME,\00:00:00\,FROM_REQUEST_START,
        VM_LOAD(21,"d:/seq/hlfp_spm_safe_jiram.mod")
    ),
    note(1,
        SCHEDULED_TIME,\00:00:04\,FROM_PREVIOUS_START,
        TEXT,\"NaN\"
    ),
end;

request(JRM_026,
    START_TIME,2024-034T22:47:32.000,
    TITLE, "jm0580_JRM_Heater_Op",
    REQUESTOR, "JRMTEAM",
    PROCESSOR, "VC2",
    KEY, "No_Key")
    command(1,
        SCHEDULED_TIME,\00:00:00\,FROM_REQUEST_START,
        THRM_SET_PT_SEL("JIRAM_OH","NON_OPERATIONAL")
    ),
    command(2,
        SCHEDULED_TIME,\00:00:01\,FROM_PREVIOUS_START,
        THRM_SET_PT_SEL("JIRAM_DECON","NON_OPERATIONAL")

```

			JIR-IAPS-SY-006-2024	
			Issue	1.0
	JUNO/JIRAM		Page	25

```

),
command(3,
    SCHEDULED_TIME,\00:00:02\,FROM_PREVIOUS_START,
    THRM_SET_PT_SEL("JIRAM_ELECT_BP","NON_OPERATIONAL")
),
    note(1,
        SCHEDULED_TIME,\00:00:04\,FROM_PREVIOUS_START,
        TEXT,\"NaN\"
    ),
end;

request(JRM_027,
    START_TIME,2024-036T06:56:01.000,
    TITLE, "jm0580_JRM_Heater_Op",
    REQUESTOR, "JRMTEAM",
    PROCESSOR, "VC2",
    KEY, "No_Key")
command(1,
    SCHEDULED_TIME,\00:00:00\,FROM_REQUEST_START,
    THRM_SET_PT_SEL("JIRAM_OH","OPERATIONAL")
),
command(2,
    SCHEDULED_TIME,\00:00:01\,FROM_PREVIOUS_START,
    THRM_SET_PT_SEL("JIRAM_DECON","OPERATIONAL")
),
command(3,
    SCHEDULED_TIME,\03:10:00\,FROM_PREVIOUS_START,
    THRM_SET_PT_SEL("JIRAM_ELECT_BP","OPERATIONAL")
),
    note(1,
        SCHEDULED_TIME,\00:00:04\,FROM_PREVIOUS_START,
        TEXT,\"NaN\"
    ),
end;

request(JRM_028,
    START_TIME,2024-036T12:17:01.000,
    TITLE, "jm0580_JRM-POWER_ON",
    REQUESTOR, "JRMTEAM",
    PROCESSOR, "VC2",
    KEY, "No_Key")
spawn(1,
    SCHEDULED_TIME,\00:00:00\,FROM_REQUEST_START,
    REQ_ENGINE_ID,21,RT_on_board_block(jiram_pwr_on)
),
    note(1,
        SCHEDULED_TIME,\00:00:04\,FROM_PREVIOUS_START,
        TEXT,\"NaN\"
    ),
end;

request(JRM_029,
    START_TIME,2024-036T12:19:44.000,
    TITLE, "jm0580_JRM_StandBy",
    REQUESTOR, "JRMTEAM",
    PROCESSOR, "VC2",
    KEY, "No_Key")
command(1,
    SCHEDULED_TIME,\00:00:00\,FROM_REQUEST_START,
    JRM_SET_PAR(111,10)
),
command(2,
    SCHEDULED_TIME,\00:00:04\,FROM_PREVIOUS_START,
    JRM_STANDBY("ON","ON","OFF")
),
command(3,
    SCHEDULED_TIME,\00:00:04\,FROM_PREVIOUS_START,
    JRM_SCI_PAR("SCI_I1_S3",120,1,10,"IDIS_SDIS","HSSL","ENABLE","DARK","DISABLE",0,956,2,150,"LOW","LOW",
    ,"POINT",-57343,2,150,"LOW","LOW","SPIN",0,"NO_SUMMED_SCI")
),
    note(1,
        SCHEDULED_TIME,\00:00:04\,FROM_PREVIOUS_START,

```

			JIR-IAPS-SY-006-2024	
			Issue	1.0
	JUNO/JIRAM		Page	26

```

        TEXT, \"NaN\"
    ),
end;

request (JRM_030,
        START_TIME, 2024-036T12:19:56.000,
        TITLE, \"jm0580_JRM_Science\",
        REQUESTOR, \"JRMTEAM\",
        PROCESSOR, \"VC2\",
        KEY, \"No_Key\")
    command(1,
        SCHEDULED_TIME, \00:00:00\, FROM_REQUEST_START,
        JRM_SET_PAR(74, 2490)
    ),
    command(2,
        SCHEDULED_TIME, \00:00:02\, FROM_PREVIOUS_START,

JRM_SCI_PAR(\"SCI_I2_S3\", 20, 1, 20, \"IDIS_SDIS\", \"HSSL\", \"ENABLE\", \"DARK\", \"DISABLE\", 0, 67, 20, 5000, \"LOW\", \"LOW
\", \"POINT\", -57343, 20, 5000, \"LOW\", \"LOW\", \"SPIN\", 1910, \"NO_SUMMED_SCI\")
    ),
    command(3,
        SCHEDULED_TIME, \00:00:02\, FROM_PREVIOUS_START,
        JRM_START_HS_REC()
    ),
    command(4,
        SCHEDULED_TIME, \00:00:02\, FROM_PREVIOUS_START,
        JRM_SCIENCE()
    ),
    command(5,
        SCHEDULED_TIME, \00:10:50\, FROM_PREVIOUS_START,
        JRM_ERROR_LOG()
    ),
    command(6,
        SCHEDULED_TIME, \00:00:02\, FROM_PREVIOUS_START,
        JRM_STOP_HS_REC()
    ),
    note(1,
        SCHEDULED_TIME, \00:00:04\, FROM_PREVIOUS_START,
        TEXT, \"South Pole\"
    ),
end;

request (JRM_031,
        START_TIME, 2024-036T12:31:07.000,
        TITLE, \"jm0580_JRM_Science\",
        REQUESTOR, \"JRMTEAM\",
        PROCESSOR, \"VC2\",
        KEY, \"No_Key\")
    command(1,
        SCHEDULED_TIME, \00:00:00\, FROM_REQUEST_START,
        JRM_SET_PAR(74, 2490)
    ),
    command(2,
        SCHEDULED_TIME, \00:00:02\, FROM_PREVIOUS_START,

JRM_SCI_PAR(\"SCI_I2_S3\", 18, 1, 18, \"IDIS_SDIS\", \"HSSL\", \"ENABLE\", \"DARK\", \"DISABLE\", 0, 75, 20, 5000, \"LOW\", \"LOW
\", \"POINT\", -57343, 20, 5000, \"LOW\", \"LOW\", \"SPIN\", 1910, \"NO_SUMMED_SCI\")
    ),
    command(3,
        SCHEDULED_TIME, \00:00:02\, FROM_PREVIOUS_START,
        JRM_START_HS_REC()
    ),
    command(4,
        SCHEDULED_TIME, \00:00:02\, FROM_PREVIOUS_START,
        JRM_SCIENCE()
    ),
    command(5,
        SCHEDULED_TIME, \00:09:49\, FROM_PREVIOUS_START,
        JRM_ERROR_LOG()
    ),
    command(6,
        SCHEDULED_TIME, \00:00:02\, FROM_PREVIOUS_START,
        JRM_STOP_HS_REC()
    )

```

			JIR-IAPS-SY-006-2024	
			Issue	1.0
	JUNO/JIRAM		Page	27

```

),
note(1,
SCHEDULED_TIME,\00:00:04\,FROM_PREVIOUS_START,
TEXT,\"South Pole\"
),
end;

request(JRM_032,
START_TIME,2024-036T12:41:17.000,
TITLE, \"jm0580_JRM_Science\",
REQUESTOR, \"JRMTEAM\",
PROCESSOR, \"VC2\",
KEY, \"No_Key\")
command(1,
SCHEDULED_TIME,\00:00:00\,FROM_REQUEST_START,
JRM_SET_PAR(74,2490)
),
command(2,
SCHEDULED_TIME,\00:00:02\,FROM_PREVIOUS_START,
JRM_SCI_PAR(\"SCI_I2_S3\",18,1,18,\"IDIS_SDIS\",\"HSSL\",\"ENABLE\",\"DARK\",\"DISABLE\",0,75,20,5000,\"LOW\",\"LOW\",
,\"POINT\",-57343,20,5000,\"LOW\",\"LOW\",\"SPIN\",1910,\"NO_SUMMED_SCI\")
),
command(3,
SCHEDULED_TIME,\00:00:02\,FROM_PREVIOUS_START,
JRM_START_HS_REC()
),
command(4,
SCHEDULED_TIME,\00:00:02\,FROM_PREVIOUS_START,
JRM_SCIENCE()
),
command(5,
SCHEDULED_TIME,\00:09:49\,FROM_PREVIOUS_START,
JRM_ERROR_LOG()
),
command(6,
SCHEDULED_TIME,\00:00:02\,FROM_PREVIOUS_START,
JRM_STOP_HS_REC()
),
note(1,
SCHEDULED_TIME,\00:00:04\,FROM_PREVIOUS_START,
TEXT,\"South Pole\"
),
end;

request(JRM_033,
START_TIME,2024-036T12:51:27.000,
TITLE, \"jm0580_JRM_Science\",
REQUESTOR, \"JRMTEAM\",
PROCESSOR, \"VC2\",
KEY, \"No_Key\")
command(1,
SCHEDULED_TIME,\00:00:00\,FROM_REQUEST_START,
JRM_SET_PAR(74,2490)
),
command(2,
SCHEDULED_TIME,\00:00:02\,FROM_PREVIOUS_START,
JRM_SCI_PAR(\"SCI_I2_S3\",18,1,18,\"IDIS_SDIS\",\"HSSL\",\"ENABLE\",\"DARK\",\"DISABLE\",0,75,20,5000,\"LOW\",\"LOW\",
,\"POINT\",-57343,20,5000,\"LOW\",\"LOW\",\"SPIN\",1909,\"NO_SUMMED_SCI\")
),
command(3,
SCHEDULED_TIME,\00:00:02\,FROM_PREVIOUS_START,
JRM_START_HS_REC()
),
command(4,
SCHEDULED_TIME,\00:00:02\,FROM_PREVIOUS_START,
JRM_SCIENCE()
),
command(5,
SCHEDULED_TIME,\00:09:49\,FROM_PREVIOUS_START,
JRM_ERROR_LOG()
),

```

			JIR-IAPS-SY-006-2024	
			Issue	1.0
	JUNO/JIRAM		Page	28

```

command(6,
    SCHEDULED_TIME,\00:00:02\,FROM_PREVIOUS_START,
    JRM_STOP_HS_REC()
),
note(1,
    SCHEDULED_TIME,\00:00:04\,FROM_PREVIOUS_START,
    TEXT,\"South Pole\"
),
end;

request(JRM_034,
    START_TIME,2024-036T13:01:37.000,
    TITLE,\"jm0580_JRM_Science\",
    REQUESTOR,\"JRMTEAM\",
    PROCESSOR,\"VC2\",
    KEY,\"No_Key\")
command(1,
    SCHEDULED_TIME,\00:00:00\,FROM_REQUEST_START,
    JRM_SET_PAR(74,2490)
),
command(2,
    SCHEDULED_TIME,\00:00:02\,FROM_PREVIOUS_START,

JRM_SCI_PAR(\"SCI_I2_S3\",18,1,18,\"IDIS_SDIS\",\"HSSL\",\"ENABLE\",\"DARK\",\"DISABLE\",0,75,20,5000,\"LOW\",\"LOW
\",\"POINT\",-57343,20,5000,\"LOW\",\"LOW\",\"SPIN\",1909,\"NO_SUMMED_SCI\")
),
command(3,
    SCHEDULED_TIME,\00:00:02\,FROM_PREVIOUS_START,
    JRM_START_HS_REC()
),
command(4,
    SCHEDULED_TIME,\00:00:02\,FROM_PREVIOUS_START,
    JRM_SCIENCE()
),
command(5,
    SCHEDULED_TIME,\00:09:49\,FROM_PREVIOUS_START,
    JRM_ERROR_LOG()
),
command(6,
    SCHEDULED_TIME,\00:00:02\,FROM_PREVIOUS_START,
    JRM_STOP_HS_REC()
),
note(1,
    SCHEDULED_TIME,\00:00:04\,FROM_PREVIOUS_START,
    TEXT,\"South Pole\"
),
end;

request(JRM_035,
    START_TIME,2024-036T13:11:47.000,
    TITLE,\"jm0580_JRM_Science\",
    REQUESTOR,\"JRMTEAM\",
    PROCESSOR,\"VC2\",
    KEY,\"No_Key\")
command(1,
    SCHEDULED_TIME,\00:00:00\,FROM_REQUEST_START,
    JRM_SET_PAR(74,2490)
),
command(2,
    SCHEDULED_TIME,\00:00:02\,FROM_PREVIOUS_START,

JRM_SCI_PAR(\"SCI_I2_S3\",18,1,18,\"IDIS_SDIS\",\"HSSL\",\"ENABLE\",\"DARK\",\"DISABLE\",0,75,20,5000,\"LOW\",\"LOW
\",\"POINT\",-57343,20,5000,\"LOW\",\"LOW\",\"SPIN\",1908,\"NO_SUMMED_SCI\")
),
command(3,
    SCHEDULED_TIME,\00:00:02\,FROM_PREVIOUS_START,
    JRM_START_HS_REC()
),
command(4,
    SCHEDULED_TIME,\00:00:02\,FROM_PREVIOUS_START,
    JRM_SCIENCE()
),
command(5,

```

			JIR-IAPS-SY-006-2024	
			Issue	1.0
	JUNO/JIRAM		Page	29

```

        SCHEDULED_TIME,\00:09:49\,FROM_PREVIOUS_START,
        JRM_ERROR_LOG()
    ),
    command(6,
        SCHEDULED_TIME,\00:00:02\,FROM_PREVIOUS_START,
        JRM_STOP_HS_REC()
    ),
    note(1,
        SCHEDULED_TIME,\00:00:04\,FROM_PREVIOUS_START,
        TEXT,\"South Pole\"
    ),
end;

request(JRM_036,
    START_TIME,2024-036T14:19:54.000,
    TITLE, "jm0580_JRM_Science",
    REQUESTOR, "JRMTEAM",
    PROCESSOR, "VC2",
    KEY, "No_Key")
    command(1,
        SCHEDULED_TIME,\00:00:00\,FROM_REQUEST_START,
        JRM_SET_PAR(74,2490)
    ),
    command(2,
        SCHEDULED_TIME,\00:00:02\,FROM_PREVIOUS_START,
        JRM_SCI_PAR("SCI_I2_S3",20,1,20,"IDIS_SDIS","HSSL","ENABLE","DARK","DISABLE",0,67,20,5000,"LOW","LOW",
        ,"POINT",-57343,20,5000,"LOW","LOW","SPIN",1906,"NO_SUMMED_SCI")
    ),
    command(3,
        SCHEDULED_TIME,\00:00:02\,FROM_PREVIOUS_START,
        JRM_START_HS_REC()
    ),
    command(4,
        SCHEDULED_TIME,\00:00:02\,FROM_PREVIOUS_START,
        JRM_SCIENCE()
    ),
    command(5,
        SCHEDULED_TIME,\00:10:50\,FROM_PREVIOUS_START,
        JRM_ERROR_LOG()
    ),
    command(6,
        SCHEDULED_TIME,\00:00:02\,FROM_PREVIOUS_START,
        JRM_STOP_HS_REC()
    ),
    note(1,
        SCHEDULED_TIME,\00:00:04\,FROM_PREVIOUS_START,
        TEXT,\"South Pole\"
    ),
end;

request(JRM_037,
    START_TIME,2024-036T14:31:05.000,
    TITLE, "jm0580_JRM_Science",
    REQUESTOR, "JRMTEAM",
    PROCESSOR, "VC2",
    KEY, "No_Key")
    command(1,
        SCHEDULED_TIME,\00:00:00\,FROM_REQUEST_START,
        JRM_SET_PAR(74,2490)
    ),
    command(2,
        SCHEDULED_TIME,\00:00:02\,FROM_PREVIOUS_START,
        JRM_SCI_PAR("SCI_I2_S3",18,1,18,"IDIS_SDIS","HSSL","ENABLE","DARK","DISABLE",0,75,20,5000,"LOW","LOW",
        ,"POINT",-57343,20,5000,"LOW","LOW","SPIN",1905,"NO_SUMMED_SCI")
    ),
    command(3,
        SCHEDULED_TIME,\00:00:02\,FROM_PREVIOUS_START,
        JRM_START_HS_REC()
    ),
    command(4,
        SCHEDULED_TIME,\00:00:02\,FROM_PREVIOUS_START,

```

			JIR-IAPS-SY-006-2024	
			Issue	1.0
	JUNO/JIRAM		Page	30

```

        JRM_SCIENCE ()
    ),
    command(5,
        SCHEDULED_TIME,\00:09:49\,FROM_PREVIOUS_START,
        JRM_ERROR_LOG ()
    ),
    command(6,
        SCHEDULED_TIME,\00:00:02\,FROM_PREVIOUS_START,
        JRM_STOP_HS_REC ()
    ),
    note(1,
        SCHEDULED_TIME,\00:00:04\,FROM_PREVIOUS_START,
        TEXT,\"South Pole\"
    ),
end;

request (JRM_038,
    START_TIME,2024-036T14:41:15.000,
    TITLE, "jm0580_JRM_Science",
    REQUESTOR, "JRMTEAM",
    PROCESSOR, "VC2",
    KEY, "No_Key")
    command(1,
        SCHEDULED_TIME,\00:00:00\,FROM_REQUEST_START,
        JRM_SET_PAR(74,2490)
    ),
    command(2,
        SCHEDULED_TIME,\00:00:02\,FROM_PREVIOUS_START,
JRM_SCI_PAR("SCI_I2_S3",18,1,18,"IDIS_SDIS","HSSL","ENABLE","DARK","DISABLE",0,75,20,5000,"LOW","LOW",
", "POINT",-57343,20,5000,"LOW","LOW","SPIN",1905,"NO_SUMMED_SCI")
    ),
    command(3,
        SCHEDULED_TIME,\00:00:02\,FROM_PREVIOUS_START,
        JRM_START_HS_REC ()
    ),
    command(4,
        SCHEDULED_TIME,\00:00:02\,FROM_PREVIOUS_START,
        JRM_SCIENCE ()
    ),
    command(5,
        SCHEDULED_TIME,\00:09:49\,FROM_PREVIOUS_START,
        JRM_ERROR_LOG ()
    ),
    command(6,
        SCHEDULED_TIME,\00:00:02\,FROM_PREVIOUS_START,
        JRM_STOP_HS_REC ()
    ),
    note(1,
        SCHEDULED_TIME,\00:00:04\,FROM_PREVIOUS_START,
        TEXT,\"South Pole\"
    ),
end;

request (JRM_039,
    START_TIME,2024-036T14:51:25.000,
    TITLE, "jm0580_JRM_Science",
    REQUESTOR, "JRMTEAM",
    PROCESSOR, "VC2",
    KEY, "No_Key")
    command(1,
        SCHEDULED_TIME,\00:00:00\,FROM_REQUEST_START,
        JRM_SET_PAR(74,2490)
    ),
    command(2,
        SCHEDULED_TIME,\00:00:02\,FROM_PREVIOUS_START,
JRM_SCI_PAR("SCI_I2_S3",18,1,18,"IDIS_SDIS","HSSL","ENABLE","DARK","DISABLE",0,75,20,5000,"LOW","LOW",
", "POINT",-57343,20,5000,"LOW","LOW","SPIN",1905,"NO_SUMMED_SCI")
    ),
    command(3,
        SCHEDULED_TIME,\00:00:02\,FROM_PREVIOUS_START,
        JRM_START_HS_REC ()
    )

```


			JIR-IAPS-SY-006-2024	
			Issue	1.0
	JUNO/JIRAM		Page	31

```

),
command(4,
  SCHEDULED_TIME,\00:00:02\,FROM_PREVIOUS_START,
  JRM_SCIENCE()
),
command(5,
  SCHEDULED_TIME,\00:09:49\,FROM_PREVIOUS_START,
  JRM_ERROR_LOG()
),
command(6,
  SCHEDULED_TIME,\00:00:02\,FROM_PREVIOUS_START,
  JRM_STOP_HS_REC()
),
note(1,
  SCHEDULED_TIME,\00:00:04\,FROM_PREVIOUS_START,
  TEXT,\"South Pole\"
),
end;

request(JRM_040,
  START_TIME,2024-036T15:01:35.000,
  TITLE,\"jm0580_JRM_Science\",
  REQUESTOR,\"JRMTEAM\",
  PROCESSOR,\"VC2\",
  KEY,\"No_Key\")
command(1,
  SCHEDULED_TIME,\00:00:00\,FROM_REQUEST_START,
  JRM_SET_PAR(74,2490)
),
command(2,
  SCHEDULED_TIME,\00:00:02\,FROM_PREVIOUS_START,
  JRM_SCI_PAR(\"SCI_I2_S3\",18,1,18,\"IDIS_SDIS\",\"HSSL\",\"ENABLE\",\"DARK\",\"DISABLE\",0,75,20,5000,\"LOW\",\"LOW\",
  \"POINT\",-57343,20,5000,\"LOW\",\"LOW\",\"SPIN\",1905,\"NO_SUMMED_SCI\")
),
command(3,
  SCHEDULED_TIME,\00:00:02\,FROM_PREVIOUS_START,
  JRM_START_HS_REC()
),
command(4,
  SCHEDULED_TIME,\00:00:02\,FROM_PREVIOUS_START,
  JRM_SCIENCE()
),
command(5,
  SCHEDULED_TIME,\00:09:49\,FROM_PREVIOUS_START,
  JRM_ERROR_LOG()
),
command(6,
  SCHEDULED_TIME,\00:00:02\,FROM_PREVIOUS_START,
  JRM_STOP_HS_REC()
),
note(1,
  SCHEDULED_TIME,\00:00:04\,FROM_PREVIOUS_START,
  TEXT,\"South Pole\"
),
end;

request(JRM_041,
  START_TIME,2024-036T15:11:45.000,
  TITLE,\"jm0580_JRM_Science\",
  REQUESTOR,\"JRMTEAM\",
  PROCESSOR,\"VC2\",
  KEY,\"No_Key\")
command(1,
  SCHEDULED_TIME,\00:00:00\,FROM_REQUEST_START,
  JRM_SET_PAR(74,2490)
),
command(2,
  SCHEDULED_TIME,\00:00:02\,FROM_PREVIOUS_START,
  JRM_SCI_PAR(\"SCI_I2_S3\",18,1,18,\"IDIS_SDIS\",\"HSSL\",\"ENABLE\",\"DARK\",\"DISABLE\",0,75,20,5000,\"LOW\",\"LOW\",
  \"POINT\",-57343,20,5000,\"LOW\",\"LOW\",\"SPIN\",1905,\"NO_SUMMED_SCI\")
),

```

			JIR-IAPS-SY-006-2024	
			Issue	1.0
	JUNO/JIRAM		Page	32

```

command(3,
    SCHEDULED_TIME,\00:00:02\,FROM_PREVIOUS_START,
    JRM_START_HS_REC()
),
command(4,
    SCHEDULED_TIME,\00:00:02\,FROM_PREVIOUS_START,
    JRM_SCIENCE()
),
command(5,
    SCHEDULED_TIME,\00:09:49\,FROM_PREVIOUS_START,
    JRM_ERROR_LOG()
),
command(6,
    SCHEDULED_TIME,\00:00:02\,FROM_PREVIOUS_START,
    JRM_STOP_HS_REC()
),
note(1,
    SCHEDULED_TIME,\00:00:04\,FROM_PREVIOUS_START,
    TEXT,\"South Pole\"
),
end;

request(JRM_042,
    START_TIME,2024-036T15:21:46.000,
    TITLE, "jm0580_JRM-POWER_OFF",
    REQUESTOR, "JRMTEAM",
    PROCESSOR, "VC2",
    KEY, "No_Key")

command(1,
    SCHEDULED_TIME,\00:00:00\,FROM_REQUEST_START,
    VM_LOAD(21,\"d:/seq/hlfp_spm_safe_jiram.mod")
),
note(1,
    SCHEDULED_TIME,\00:00:04\,FROM_PREVIOUS_START,
    TEXT,\"NaN\"
),
end;

request(JRM_043,
    START_TIME,2024-036T15:22:02.000,
    TITLE, "jm0580_JRM_Heater_Op",
    REQUESTOR, "JRMTEAM",
    PROCESSOR, "VC2",
    KEY, "No_Key")

command(1,
    SCHEDULED_TIME,\00:00:00\,FROM_REQUEST_START,
    THRM_SET_PT_SEL("JIRAM_OH","NON_OPERATIONAL")
),
command(2,
    SCHEDULED_TIME,\00:00:01\,FROM_PREVIOUS_START,
    THRM_SET_PT_SEL("JIRAM_DECON","NON_OPERATIONAL")
),
command(3,
    SCHEDULED_TIME,\00:00:02\,FROM_PREVIOUS_START,
    THRM_SET_PT_SEL("JIRAM_ELECT_BE","NON_OPERATIONAL")
),
note(1,
    SCHEDULED_TIME,\00:00:04\,FROM_PREVIOUS_START,
    TEXT,\"NaN\"
),
end;

request(JRM_044,
    START_TIME,2024-037T06:56:08.000,
    TITLE, "jm0580_JRM_Heater_Op",
    REQUESTOR, "JRMTEAM",
    PROCESSOR, "VC2",
    KEY, "No_Key")

command(1,
    SCHEDULED_TIME,\00:00:00\,FROM_REQUEST_START,
    THRM_SET_PT_SEL("JIRAM_OH","OPERATIONAL")
),
command(2,

```

			JIR-IAPS-SY-006-2024	
			Issue	1.0
	JUNO/JIRAM		Page	33

```

        SCHEDULED_TIME,\00:00:01\,FROM_PREVIOUS_START,
        THRM_SET_PT_SEL("JIRAM_DECON","OPERATIONAL")
    ),
    command(3,
        SCHEDULED_TIME,\03:10:00\,FROM_PREVIOUS_START,
        THRM_SET_PT_SEL("JIRAM_ELECT_BP","OPERATIONAL")
    ),
        note(1,
            SCHEDULED_TIME,\00:00:04\,FROM_PREVIOUS_START,
            TEXT,\"NaN\"
        ),
end;

request(JRM_045,
    START_TIME,2024-037T12:17:08.000,
    TITLE, "jm0580_JRM-POWER_ON",
    REQUESTOR, "JRMTEAM",
    PROCESSOR, "VC2",
    KEY, "No_Key")
    spawn(1,
        SCHEDULED_TIME,\00:00:00\,FROM_REQUEST_START,
        REQ_ENGINE_ID,21,RT_on_board_block(jiram_pwr_on)
    ),
        note(1,
            SCHEDULED_TIME,\00:00:04\,FROM_PREVIOUS_START,
            TEXT,\"NaN\"
        ),
end;

request(JRM_046,
    START_TIME,2024-037T12:19:51.000,
    TITLE, "jm0580_JRM_StandBy",
    REQUESTOR, "JRMTEAM",
    PROCESSOR, "VC2",
    KEY, "No_Key")
    command(1,
        SCHEDULED_TIME,\00:00:00\,FROM_REQUEST_START,
        JRM_SET_PAR(111,10)
    ),
    command(2,
        SCHEDULED_TIME,\00:00:04\,FROM_PREVIOUS_START,
        JRM_STANDBY("ON","ON","OFF")
    ),
    command(3,
        SCHEDULED_TIME,\00:00:04\,FROM_PREVIOUS_START,

JRM_SCI_PAR("SCI_I1_S3",120,1,10,"IDIS_SDIS","HSSL","ENABLE","DARK","DISABLE",0,956,2,150,"LOW","LOW
","POINT",-57343,2,150,"LOW","LOW","SPIN",0,"NO_SUMMED_SCI")
    ),
        note(1,
            SCHEDULED_TIME,\00:00:04\,FROM_PREVIOUS_START,
            TEXT,\"NaN\"
        ),
end;

request(JRM_047,
    START_TIME,2024-037T12:20:03.000,
    TITLE, "jm0580_JRM_Science",
    REQUESTOR, "JRMTEAM",
    PROCESSOR, "VC2",
    KEY, "No_Key")
    command(1,
        SCHEDULED_TIME,\00:00:00\,FROM_REQUEST_START,
        JRM_SET_PAR(74,2490)
    ),
    command(2,
        SCHEDULED_TIME,\00:00:02\,FROM_PREVIOUS_START,

JRM_SCI_PAR("SCI_I2_S3",20,1,20,"IDIS_SDIS","HSSL","ENABLE","DARK","DISABLE",0,67,20,5000,"LOW","LOW
","POINT",-57343,20,5000,"LOW","LOW","SPIN",1868,"NO_SUMMED_SCI")
    ),
    command(3,
        SCHEDULED_TIME,\00:00:02\,FROM_PREVIOUS_START,

```

			JIR-IAPS-SY-006-2024	
			Issue	1.0
	JUNO/JIRAM		Page	34

```

        JRM_START_HS_REC ()
    ),
    command(4,
        SCHEDULED_TIME,\00:00:02\,FROM_PREVIOUS_START,
        JRM_SCIENCE ()
    ),
    command(5,
        SCHEDULED_TIME,\00:10:50\,FROM_PREVIOUS_START,
        JRM_ERROR_LOG ()
    ),
    command(6,
        SCHEDULED_TIME,\00:00:02\,FROM_PREVIOUS_START,
        JRM_STOP_HS_REC ()
    ),
    note(1,
        SCHEDULED_TIME,\00:00:04\,FROM_PREVIOUS_START,
        TEXT,\"South Pole\"
    ),
end;

request (JRM_048,
    START_TIME,2024-037T12:31:14.000,
    TITLE, "jm0580_JRM_Science",
    REQUESTOR, "JRMTEAM",
    PROCESSOR, "VC2",
    KEY, "No_Key")
    command(1,
        SCHEDULED_TIME,\00:00:00\,FROM_REQUEST_START,
        JRM_SET_PAR(74,2490)
    ),
    command(2,
        SCHEDULED_TIME,\00:00:02\,FROM_PREVIOUS_START,
JRM_SCI_PAR("SCI_I2_S3",18,1,18,"IDIS_SDIS","HSSL","ENABLE","DARK","DISABLE",0,75,20,5000,"LOW","LOW",
", "POINT",-57343,20,5000,"LOW","LOW","SPIN",1868,"NO_SUMMED_SCI")
    ),
    command(3,
        SCHEDULED_TIME,\00:00:02\,FROM_PREVIOUS_START,
        JRM_START_HS_REC ()
    ),
    command(4,
        SCHEDULED_TIME,\00:00:02\,FROM_PREVIOUS_START,
        JRM_SCIENCE ()
    ),
    command(5,
        SCHEDULED_TIME,\00:09:49\,FROM_PREVIOUS_START,
        JRM_ERROR_LOG ()
    ),
    command(6,
        SCHEDULED_TIME,\00:00:02\,FROM_PREVIOUS_START,
        JRM_STOP_HS_REC ()
    ),
    note(1,
        SCHEDULED_TIME,\00:00:04\,FROM_PREVIOUS_START,
        TEXT,\"South Pole\"
    ),
end;

request (JRM_049,
    START_TIME,2024-037T12:41:24.000,
    TITLE, "jm0580_JRM_Science",
    REQUESTOR, "JRMTEAM",
    PROCESSOR, "VC2",
    KEY, "No_Key")
    command(1,
        SCHEDULED_TIME,\00:00:00\,FROM_REQUEST_START,
        JRM_SET_PAR(74,2490)
    ),
    command(2,
        SCHEDULED_TIME,\00:00:02\,FROM_PREVIOUS_START,
JRM_SCI_PAR("SCI_I2_S3",18,1,18,"IDIS_SDIS","HSSL","ENABLE","DARK","DISABLE",0,75,20,5000,"LOW","LOW",
", "POINT",-57343,20,5000,"LOW","LOW","SPIN",1868,"NO_SUMMED_SCI")

```

			JIR-IAPS-SY-006-2024	
			Issue	1.0
	JUNO/JIRAM		Page	35

```

),
command(3,
  SCHEDULED_TIME,\00:00:02\,FROM_PREVIOUS_START,
  JRM_START_HS_REC()
),
command(4,
  SCHEDULED_TIME,\00:00:02\,FROM_PREVIOUS_START,
  JRM_SCIENCE()
),
command(5,
  SCHEDULED_TIME,\00:09:49\,FROM_PREVIOUS_START,
  JRM_ERROR_LOG()
),
command(6,
  SCHEDULED_TIME,\00:00:02\,FROM_PREVIOUS_START,
  JRM_STOP_HS_REC()
),
note(1,
  SCHEDULED_TIME,\00:00:04\,FROM_PREVIOUS_START,
  TEXT,\"South Pole\"
),
end;

request(JRM_050,
  START_TIME,2024-037T12:51:34.000,
  TITLE,\"jm0580_JRM_Science\",
  REQUESTOR,\"JRMTEAM\",
  PROCESSOR,\"VC2\",
  KEY,\"No_Key\")
command(1,
  SCHEDULED_TIME,\00:00:00\,FROM_REQUEST_START,
  JRM_SET_PAR(74,2490)
),
command(2,
  SCHEDULED_TIME,\00:00:02\,FROM_PREVIOUS_START,
  JRM_SCI_PAR(\"SCI_I2_S3\",18,1,18,\"IDIS_SDIS\",\"HSSL\",\"ENABLE\",\"DARK\",\"DISABLE\",0,75,20,5000,\"LOW\",\"LOW\",
  \"POINT\",-57343,20,5000,\"LOW\",\"LOW\",\"SPIN\",1866,\"NO_SUMMED_SCI\")
),
command(3,
  SCHEDULED_TIME,\00:00:02\,FROM_PREVIOUS_START,
  JRM_START_HS_REC()
),
command(4,
  SCHEDULED_TIME,\00:00:02\,FROM_PREVIOUS_START,
  JRM_SCIENCE()
),
command(5,
  SCHEDULED_TIME,\00:09:49\,FROM_PREVIOUS_START,
  JRM_ERROR_LOG()
),
command(6,
  SCHEDULED_TIME,\00:00:02\,FROM_PREVIOUS_START,
  JRM_STOP_HS_REC()
),
note(1,
  SCHEDULED_TIME,\00:00:04\,FROM_PREVIOUS_START,
  TEXT,\"South Pole\"
),
end;

request(JRM_051,
  START_TIME,2024-037T13:01:44.000,
  TITLE,\"jm0580_JRM_Science\",
  REQUESTOR,\"JRMTEAM\",
  PROCESSOR,\"VC2\",
  KEY,\"No_Key\")
command(1,
  SCHEDULED_TIME,\00:00:00\,FROM_REQUEST_START,
  JRM_SET_PAR(74,2490)
),
command(2,
  SCHEDULED_TIME,\00:00:02\,FROM_PREVIOUS_START,

```

			JIR-IAPS-SY-006-2024	
			Issue	1.0
	JUNO/JIRAM		Page	36

```

JRM_SCI_PAR("SCI_I2_S3",18,1,18,"IDIS_SDIS","HSSL","ENABLE","DARK","DISABLE",0,75,20,5000,"LOW","LOW",
", "POINT",-57343,20,5000,"LOW","LOW","SPIN",1866,"NO_SUMMED_SCI")
),
command(3,
SCHEDULED_TIME,\00:00:02\,FROM_PREVIOUS_START,
JRM_START_HS_REC()
),
command(4,
SCHEDULED_TIME,\00:00:02\,FROM_PREVIOUS_START,
JRM_SCIENCE()
),
command(5,
SCHEDULED_TIME,\00:09:49\,FROM_PREVIOUS_START,
JRM_ERROR_LOG()
),
command(6,
SCHEDULED_TIME,\00:00:02\,FROM_PREVIOUS_START,
JRM_STOP_HS_REC()
),
note(1,
SCHEDULED_TIME,\00:00:04\,FROM_PREVIOUS_START,
TEXT,\"South Pole\"
),
end;

request(JRM_052,
START_TIME,2024-037T13:11:54.000,
TITLE, "jm0580_JRM_Science",
REQUESTOR, "JRMTEAM",
PROCESSOR, "VC2",
KEY, "No_Key")
command(1,
SCHEDULED_TIME,\00:00:00\,FROM_REQUEST_START,
JRM_SET_PAR(74,2490)
),
command(2,
SCHEDULED_TIME,\00:00:02\,FROM_PREVIOUS_START,

JRM_SCI_PAR("SCI_I2_S3",18,1,18,"IDIS_SDIS","HSSL","ENABLE","DARK","DISABLE",0,75,20,5000,"LOW","LOW",
", "POINT",-57343,20,5000,"LOW","LOW","SPIN",1866,"NO_SUMMED_SCI")
),
command(3,
SCHEDULED_TIME,\00:00:02\,FROM_PREVIOUS_START,
JRM_START_HS_REC()
),
command(4,
SCHEDULED_TIME,\00:00:02\,FROM_PREVIOUS_START,
JRM_SCIENCE()
),
command(5,
SCHEDULED_TIME,\00:09:49\,FROM_PREVIOUS_START,
JRM_ERROR_LOG()
),
command(6,
SCHEDULED_TIME,\00:00:02\,FROM_PREVIOUS_START,
JRM_STOP_HS_REC()
),
note(1,
SCHEDULED_TIME,\00:00:04\,FROM_PREVIOUS_START,
TEXT,\"South Pole\"
),
end;

request(JRM_053,
START_TIME,2024-037T13:21:55.000,
TITLE, "jm0580_JRM-POWER_OFF",
REQUESTOR, "JRMTEAM",
PROCESSOR, "VC2",
KEY, "No_Key")
command(1,
SCHEDULED_TIME,\00:00:00\,FROM_REQUEST_START,
VM_LOAD(21,"d:/seq/hlfp_spm_safe_jiram.mod")

```

			JIR-IAPS-SY-006-2024	
			Issue	1.0
	JUNO/JIRAM		Page	37

```

),
note(1,
  SCHEDULED_TIME,\00:00:04\,FROM_PREVIOUS_START,
  TEXT,\"NaN\"
),
),
end;

request(JRM_054,
  START_TIME,2024-037T13:22:11.000,
  TITLE, "jm0580_JRM_Heater_Op",
  REQUESTOR, "JRMTEAM",
  PROCESSOR, "VC2",
  KEY, "No_Key")
command(1,
  SCHEDULED_TIME,\00:00:00\,FROM_REQUEST_START,
  THRM_SET_PT_SEL("JIRAM_OH","NON_OPERATIONAL")
),
command(2,
  SCHEDULED_TIME,\00:00:01\,FROM_PREVIOUS_START,
  THRM_SET_PT_SEL("JIRAM_DECON","NON_OPERATIONAL")
),
command(3,
  SCHEDULED_TIME,\00:00:02\,FROM_PREVIOUS_START,
  THRM_SET_PT_SEL("JIRAM_ELECT_BP","NON_OPERATIONAL")
),
note(1,
  SCHEDULED_TIME,\00:00:04\,FROM_PREVIOUS_START,
  TEXT,\"NaN\"
),
),
end;

request(JRM_055,
  START_TIME,2024-038T06:56:14.000,
  TITLE, "jm0580_JRM_Heater_Op",
  REQUESTOR, "JRMTEAM",
  PROCESSOR, "VC2",
  KEY, "No_Key")
command(1,
  SCHEDULED_TIME,\00:00:00\,FROM_REQUEST_START,
  THRM_SET_PT_SEL("JIRAM_OH","OPERATIONAL")
),
command(2,
  SCHEDULED_TIME,\00:00:01\,FROM_PREVIOUS_START,
  THRM_SET_PT_SEL("JIRAM_DECON","OPERATIONAL")
),
command(3,
  SCHEDULED_TIME,\03:10:00\,FROM_PREVIOUS_START,
  THRM_SET_PT_SEL("JIRAM_ELECT_BP","OPERATIONAL")
),
note(1,
  SCHEDULED_TIME,\00:00:04\,FROM_PREVIOUS_START,
  TEXT,\"NaN\"
),
),
end;

request(JRM_056,
  START_TIME,2024-038T12:17:14.000,
  TITLE, "jm0580_JRM-POWER_ON",
  REQUESTOR, "JRMTEAM",
  PROCESSOR, "VC2",
  KEY, "No_Key")
spawn(1,
  SCHEDULED_TIME,\00:00:00\,FROM_REQUEST_START,
  REQ_ENGINE_ID,21,RT_on_board_block(jiram_pwr_on)
),
note(1,
  SCHEDULED_TIME,\00:00:04\,FROM_PREVIOUS_START,
  TEXT,\"NaN\"
),
),
end;

request(JRM_057,
  START_TIME,2024-038T12:19:57.000,

```


			JIR-IAPS-SY-006-2024	
			Issue	1.0
	JUNO/JIRAM		Page	38

```

TITLE, "jm0580_JRM_StandBy",
REQUESTOR, "JRMTEAM",
PROCESSOR, "VC2",
KEY, "No_Key")
command(1,
  SCHEDULED_TIME,\00:00:00\,FROM_REQUEST_START,
  JRM_SET_PAR(111,10)
),
command(2,
  SCHEDULED_TIME,\00:00:04\,FROM_PREVIOUS_START,
  JRM_STANDBY("ON","ON","OFF")
),
command(3,
  SCHEDULED_TIME,\00:00:04\,FROM_PREVIOUS_START,
  JRM_SCI_PAR("SCI_I1_S3",120,1,10,"IDIS_SDIS","HSSL","ENABLE","DARK","DISABLE",0,956,2,150,"LOW","LOW",
  "POINT",-57343,2,150,"LOW","LOW","SPIN",0,"NO_SUMMED_SCI")
),
  note(1,
    SCHEDULED_TIME,\00:00:04\,FROM_PREVIOUS_START,
    TEXT,\"NaN\"
  ),
end;

request(JRM_058,
  START_TIME,2024-038T12:20:09.000,
  TITLE, "jm0580_JRM_Science",
  REQUESTOR, "JRMTEAM",
  PROCESSOR, "VC2",
  KEY, "No_Key")
command(1,
  SCHEDULED_TIME,\00:00:00\,FROM_REQUEST_START,
  JRM_SET_PAR(74,2490)
),
command(2,
  SCHEDULED_TIME,\00:00:02\,FROM_PREVIOUS_START,
  JRM_SCI_PAR("SCI_I2_S3",20,1,20,"IDIS_SDIS","HSSL","ENABLE","DARK","DISABLE",0,34,20,5000,"LOW","LOW",
  "POINT",-57343,20,5000,"LOW","LOW","SPIN",2155,"NO_SUMMED_SCI")
),
command(3,
  SCHEDULED_TIME,\00:00:02\,FROM_PREVIOUS_START,
  JRM_START_HS_REC()
),
command(4,
  SCHEDULED_TIME,\00:00:02\,FROM_PREVIOUS_START,
  JRM_SCIENCE()
),
command(5,
  SCHEDULED_TIME,\00:10:51\,FROM_PREVIOUS_START,
  JRM_ERROR_LOG()
),
command(6,
  SCHEDULED_TIME,\00:00:02\,FROM_PREVIOUS_START,
  JRM_STOP_HS_REC()
),
  note(1,
    SCHEDULED_TIME,\00:00:04\,FROM_PREVIOUS_START,
    TEXT,\"South Pole\"
  ),
end;

request(JRM_059,
  START_TIME,2024-038T12:31:20.000,
  TITLE, "jm0580_JRM_Science",
  REQUESTOR, "JRMTEAM",
  PROCESSOR, "VC2",
  KEY, "No_Key")
command(1,
  SCHEDULED_TIME,\00:00:00\,FROM_REQUEST_START,
  JRM_SET_PAR(74,2490)
),
command(2,

```

			JIR-IAPS-SY-006-2024	
			Issue	1.0
	JUNO/JIRAM		Page	39

```

SCHEDULED_TIME,\00:00:02\,FROM_PREVIOUS_START,

JRM_SCI_PAR("SCI_I2_S3",18,1,18,"IDIS_SDIS","HSSL","ENABLE","DARK","DISABLE",0,38,20,5000,"LOW","LOW",
,"POINT",-57343,20,5000,"LOW","LOW","SPIN",2155,"NO_SUMMED_SCI")
),
command(3,
SCHEDULED_TIME,\00:00:02\,FROM_PREVIOUS_START,
JRM_START_HS_REC()
),
command(4,
SCHEDULED_TIME,\00:00:02\,FROM_PREVIOUS_START,
JRM_SCIENCE()
),
command(5,
SCHEDULED_TIME,\00:09:50\,FROM_PREVIOUS_START,
JRM_ERROR_LOG()
),
command(6,
SCHEDULED_TIME,\00:00:02\,FROM_PREVIOUS_START,
JRM_STOP_HS_REC()
),
note(1,
SCHEDULED_TIME,\00:00:04\,FROM_PREVIOUS_START,
TEXT,\"South Pole\"
),
end;

request(JRM_060,
START_TIME,2024-038T12:41:30.000,
TITLE,\"jm0580_JRM_Science\",
REQUESTOR,\"JRMTEAM\",
PROCESSOR,\"VC2\",
KEY,\"No_Key\")
command(1,
SCHEDULED_TIME,\00:00:00\,FROM_REQUEST_START,
JRM_SET_PAR(74,2490)
),
command(2,
SCHEDULED_TIME,\00:00:02\,FROM_PREVIOUS_START,

JRM_SCI_PAR("SCI_I2_S3",18,1,18,"IDIS_SDIS","HSSL","ENABLE","DARK","DISABLE",0,38,20,5000,"LOW","LOW",
,"POINT",-57343,20,5000,"LOW","LOW","SPIN",2155,"NO_SUMMED_SCI")
),
command(3,
SCHEDULED_TIME,\00:00:02\,FROM_PREVIOUS_START,
JRM_START_HS_REC()
),
command(4,
SCHEDULED_TIME,\00:00:02\,FROM_PREVIOUS_START,
JRM_SCIENCE()
),
command(5,
SCHEDULED_TIME,\00:09:50\,FROM_PREVIOUS_START,
JRM_ERROR_LOG()
),
command(6,
SCHEDULED_TIME,\00:00:02\,FROM_PREVIOUS_START,
JRM_STOP_HS_REC()
),
note(1,
SCHEDULED_TIME,\00:00:04\,FROM_PREVIOUS_START,
TEXT,\"South Pole\"
),
end;

request(JRM_061,
START_TIME,2024-038T12:51:40.000,
TITLE,\"jm0580_JRM_Science\",
REQUESTOR,\"JRMTEAM\",
PROCESSOR,\"VC2\",
KEY,\"No_Key\")
command(1,
SCHEDULED_TIME,\00:00:00\,FROM_REQUEST_START,

```

			JIR-IAPS-SY-006-2024	
			Issue	1.0
	JUNO/JIRAM		Page	40

```

        JRM_SET_PAR(74,2490)
    ),
    command(2,
        SCHEDULED_TIME,\00:00:02\,FROM_PREVIOUS_START,
JRM_SCI_PAR("SCI_I2_S3",18,1,18,"IDIS_SDIS","HSSL","ENABLE","DARK","DISABLE",0,38,20,5000,"LOW","LOW
","POINT",-57343,20,5000,"LOW","LOW","SPIN",2154,"NO_SUMMED_SCI")
    ),
    command(3,
        SCHEDULED_TIME,\00:00:02\,FROM_PREVIOUS_START,
        JRM_START_HS_REC()
    ),
    command(4,
        SCHEDULED_TIME,\00:00:02\,FROM_PREVIOUS_START,
        JRM_SCIENCE()
    ),
    command(5,
        SCHEDULED_TIME,\00:09:50\,FROM_PREVIOUS_START,
        JRM_ERROR_LOG()
    ),
    command(6,
        SCHEDULED_TIME,\00:00:02\,FROM_PREVIOUS_START,
        JRM_STOP_HS_REC()
    ),
    note(1,
        SCHEDULED_TIME,\00:00:04\,FROM_PREVIOUS_START,
        TEXT,\"South Pole\"
    ),
end;

request(JRM_062,
    START_TIME,2024-038T13:01:50.000,
    TITLE, "jm0580_JRM_Science",
    REQUESTOR, "JRMTEAM",
    PROCESSOR, "VC2",
    KEY, "No_Key")
    command(1,
        SCHEDULED_TIME,\00:00:00\,FROM_REQUEST_START,
        JRM_SET_PAR(74,2490)
    ),
    command(2,
        SCHEDULED_TIME,\00:00:02\,FROM_PREVIOUS_START,
JRM_SCI_PAR("SCI_I2_S3",18,1,18,"IDIS_SDIS","HSSL","ENABLE","DARK","DISABLE",0,38,20,5000,"LOW","LOW
","POINT",-57343,20,5000,"LOW","LOW","SPIN",2154,"NO_SUMMED_SCI")
    ),
    command(3,
        SCHEDULED_TIME,\00:00:02\,FROM_PREVIOUS_START,
        JRM_START_HS_REC()
    ),
    command(4,
        SCHEDULED_TIME,\00:00:02\,FROM_PREVIOUS_START,
        JRM_SCIENCE()
    ),
    command(5,
        SCHEDULED_TIME,\00:09:50\,FROM_PREVIOUS_START,
        JRM_ERROR_LOG()
    ),
    command(6,
        SCHEDULED_TIME,\00:00:02\,FROM_PREVIOUS_START,
        JRM_STOP_HS_REC()
    ),
    note(1,
        SCHEDULED_TIME,\00:00:04\,FROM_PREVIOUS_START,
        TEXT,\"South Pole\"
    ),
end;

request(JRM_063,
    START_TIME,2024-038T13:12:00.000,
    TITLE, "jm0580_JRM_Science",
    REQUESTOR, "JRMTEAM",
    PROCESSOR, "VC2",

```

			JIR-IAPS-SY-006-2024	
			Issue	1.0
	JUNO/JIRAM		Page	41

```

KEY, "No_Key")
command(1,
  SCHEDULED_TIME,\00:00:00\,FROM_REQUEST_START,
  JRM_SET_PAR(74,2490)
),
command(2,
  SCHEDULED_TIME,\00:00:02\,FROM_PREVIOUS_START,
  JRM_SCI_PAR("SCI_I2_S3",18,1,18,"IDIS_SDIS","HSSL","ENABLE","DARK","DISABLE",0,38,20,5000,"LOW","LOW",
  "POINT",-57343,20,5000,"LOW","LOW","SPIN",2154,"NO_SUMMED_SCI")
),
command(3,
  SCHEDULED_TIME,\00:00:02\,FROM_PREVIOUS_START,
  JRM_START_HS_REC()
),
command(4,
  SCHEDULED_TIME,\00:00:02\,FROM_PREVIOUS_START,
  JRM_SCIENCE()
),
command(5,
  SCHEDULED_TIME,\00:09:50\,FROM_PREVIOUS_START,
  JRM_ERROR_LOG()
),
command(6,
  SCHEDULED_TIME,\00:00:02\,FROM_PREVIOUS_START,
  JRM_STOP_HS_REC()
),
note(1,
  SCHEDULED_TIME,\00:00:04\,FROM_PREVIOUS_START,
  TEXT,\"South Pole\"
),
end;

request(JRM_064,
  START_TIME,2024-038T13:22:02.000,
  TITLE,"jm0580_JRM-POWER_OFF",
  REQUESTOR,"JRMTEAM",
  PROCESSOR,"VC2",
  KEY,"No_Key")

command(1,
  SCHEDULED_TIME,\00:00:00\,FROM_REQUEST_START,
  VM_LOAD(21,"d:/seq/hlfp_spm_safe_jiram.mod")
),
note(1,
  SCHEDULED_TIME,\00:00:04\,FROM_PREVIOUS_START,
  TEXT,\"NaN\"
),
end;

request(JRM_065,
  START_TIME,2024-038T13:22:18.000,
  TITLE,"jm0580_JRM_Heater_Op",
  REQUESTOR,"JRMTEAM",
  PROCESSOR,"VC2",
  KEY,"No_Key")

command(1,
  SCHEDULED_TIME,\00:00:00\,FROM_REQUEST_START,
  THRM_SET_PT_SEL("JIRAM_OH","NON_OPERATIONAL")
),
command(2,
  SCHEDULED_TIME,\00:00:01\,FROM_PREVIOUS_START,
  THRM_SET_PT_SEL("JIRAM_DECON","NON_OPERATIONAL")
),
command(3,
  SCHEDULED_TIME,\00:00:02\,FROM_PREVIOUS_START,
  THRM_SET_PT_SEL("JIRAM_ELECT_BP","NON_OPERATIONAL")
),
note(1,
  SCHEDULED_TIME,\00:00:04\,FROM_PREVIOUS_START,
  TEXT,\"NaN\"
),
end;

```

			JIR-IAPS-SY-006-2024	
			Issue	1.0
	JUNO/JIRAM		Page	42

```

request (JRM_066,
    START_TIME,2024-039T06:55:50.000,
    TITLE, "jm0580_JRM_Heater_Op",
    REQUESTOR, "JRMTEAM",
    PROCESSOR, "VC2",
    KEY, "No_Key")
    command(1,
        SCHEDULED_TIME,\00:00:00\,FROM_REQUEST_START,
        THRM_SET_PT_SEL("JIRAM_OH","OPERATIONAL")
    ),
    command(2,
        SCHEDULED_TIME,\00:00:01\,FROM_PREVIOUS_START,
        THRM_SET_PT_SEL("JIRAM_DECON","OPERATIONAL")
    ),
    command(3,
        SCHEDULED_TIME,\03:10:00\,FROM_PREVIOUS_START,
        THRM_SET_PT_SEL("JIRAM_ELECT_BF","OPERATIONAL")
    ),
    note(1,
        SCHEDULED_TIME,\00:00:04\,FROM_PREVIOUS_START,
        TEXT,\NaN\
    ),
end;

request (JRM_067,
    START_TIME,2024-039T12:16:50.000,
    TITLE, "jm0580_JRM-POWER_ON",
    REQUESTOR, "JRMTEAM",
    PROCESSOR, "VC2",
    KEY, "No_Key")
    spawn(1,
        SCHEDULED_TIME,\00:00:00\,FROM_REQUEST_START,
        REQ_ENGINE_ID,21,RT_on_board_block(jiram_pwr_on)
    ),
    note(1,
        SCHEDULED_TIME,\00:00:04\,FROM_PREVIOUS_START,
        TEXT,\NaN\
    ),
end;

request (JRM_068,
    START_TIME,2024-039T12:19:33.000,
    TITLE, "jm0580_JRM_StandBy",
    REQUESTOR, "JRMTEAM",
    PROCESSOR, "VC2",
    KEY, "No_Key")
    command(1,
        SCHEDULED_TIME,\00:00:00\,FROM_REQUEST_START,
        JRM_SET_PAR(111,10)
    ),
    command(2,
        SCHEDULED_TIME,\00:00:04\,FROM_PREVIOUS_START,
        JRM_STANDBY("ON","ON","OFF")
    ),
    command(3,
        SCHEDULED_TIME,\00:00:04\,FROM_PREVIOUS_START,
        JRM_SCI_PAR("SCI_I1_S3",120,1,10,"IDIS_SDIS","HSSL","ENABLE","DARK","DISABLE",0,956,2,150,"LOW","LOW",
        "POINT",-57343,2,150,"LOW","LOW","SPIN",0,"NO_SUMMED_SCI")
    ),
    note(1,
        SCHEDULED_TIME,\00:00:04\,FROM_PREVIOUS_START,
        TEXT,\NaN\
    ),
end;

request (JRM_069,
    START_TIME,2024-039T12:19:45.000,
    TITLE, "jm0580_JRM_Science",
    REQUESTOR, "JRMTEAM",
    PROCESSOR, "VC2",
    KEY, "No_Key")
    command(1,

```

			JIR-IAPS-SY-006-2024	
			Issue	1.0
	JUNO/JIRAM		Page	43

```

        SCHEDULED_TIME,\00:00:00\,FROM_REQUEST_START,
        JRM_SET_PAR(74,2490)
    ),
    command(2,
        SCHEDULED_TIME,\00:00:02\,FROM_PREVIOUS_START,

JRM_SCI_PAR("SCI_I2_S3",20,1,20,"IDIS_SDIS","HSSL","ENABLE","DARK","DISABLE",0,34,20,5000,"LOW","LOW
","POINT",-57343,20,5000,"LOW","LOW","SPIN",2138,"NO_SUMMED_SCI")
    ),
    command(3,
        SCHEDULED_TIME,\00:00:02\,FROM_PREVIOUS_START,
        JRM_START_HS_REC()
    ),
    command(4,
        SCHEDULED_TIME,\00:00:02\,FROM_PREVIOUS_START,
        JRM_SCIENCE()
    ),
    command(5,
        SCHEDULED_TIME,\00:10:51\,FROM_PREVIOUS_START,
        JRM_ERROR_LOG()
    ),
    command(6,
        SCHEDULED_TIME,\00:00:02\,FROM_PREVIOUS_START,
        JRM_STOP_HS_REC()
    ),
    note(1,
        SCHEDULED_TIME,\00:00:04\,FROM_PREVIOUS_START,
        TEXT,\"South Pole\"
    ),
end;

request(JRM_070,
    START_TIME,2024-039T12:30:56.000,
    TITLE,"jm0580_JRM_Science",
    REQUESTOR,"JRMTEAM",
    PROCESSOR,"VC2",
    KEY,"No_Key")
    command(1,
        SCHEDULED_TIME,\00:00:00\,FROM_REQUEST_START,
        JRM_SET_PAR(74,2490)
    ),
    command(2,
        SCHEDULED_TIME,\00:00:02\,FROM_PREVIOUS_START,

JRM_SCI_PAR("SCI_I2_S3",18,1,18,"IDIS_SDIS","HSSL","ENABLE","DARK","DISABLE",0,38,20,5000,"LOW","LOW
","POINT",-57343,20,5000,"LOW","LOW","SPIN",2138,"NO_SUMMED_SCI")
    ),
    command(3,
        SCHEDULED_TIME,\00:00:02\,FROM_PREVIOUS_START,
        JRM_START_HS_REC()
    ),
    command(4,
        SCHEDULED_TIME,\00:00:02\,FROM_PREVIOUS_START,
        JRM_SCIENCE()
    ),
    command(5,
        SCHEDULED_TIME,\00:09:50\,FROM_PREVIOUS_START,
        JRM_ERROR_LOG()
    ),
    command(6,
        SCHEDULED_TIME,\00:00:02\,FROM_PREVIOUS_START,
        JRM_STOP_HS_REC()
    ),
    note(1,
        SCHEDULED_TIME,\00:00:04\,FROM_PREVIOUS_START,
        TEXT,\"South Pole\"
    ),
end;

request(JRM_071,
    START_TIME,2024-039T12:41:06.000,
    TITLE,"jm0580_JRM_Science",
    REQUESTOR,"JRMTEAM",

```

			JIR-IAPS-SY-006-2024	
			Issue	1.0
	JUNO/JIRAM		Page	44

```

PROCESSOR, "VC2",
KEY, "No_Key")
command(1,
SCHEDULED_TIME,\00:00:00\,FROM_REQUEST_START,
JRM_SET_PAR(74,2490)
),
command(2,
SCHEDULED_TIME,\00:00:02\,FROM_PREVIOUS_START,
JRM_SCI_PAR("SCI_I2_S3",18,1,18,"IDIS_SDIS","HSSL","ENABLE","DARK","DISABLE",0,38,20,5000,"LOW","LOW",
"POINT",-57343,20,5000,"LOW","LOW","SPIN",2137,"NO_SUMMED_SCI")
),
command(3,
SCHEDULED_TIME,\00:00:02\,FROM_PREVIOUS_START,
JRM_START_HS_REC()
),
command(4,
SCHEDULED_TIME,\00:00:02\,FROM_PREVIOUS_START,
JRM_SCIENCE()
),
command(5,
SCHEDULED_TIME,\00:09:50\,FROM_PREVIOUS_START,
JRM_ERROR_LOG()
),
command(6,
SCHEDULED_TIME,\00:00:02\,FROM_PREVIOUS_START,
JRM_STOP_HS_REC()
),
note(1,
SCHEDULED_TIME,\00:00:04\,FROM_PREVIOUS_START,
TEXT,\"South Pole\"
),
end;

request(JRM_072,
START_TIME,2024-039T12:51:16.000,
TITLE, "jm0580_JRM_Science",
REQUESTOR, "JRMTEAM",
PROCESSOR, "VC2",
KEY, "No_Key")
command(1,
SCHEDULED_TIME,\00:00:00\,FROM_REQUEST_START,
JRM_SET_PAR(74,2490)
),
command(2,
SCHEDULED_TIME,\00:00:02\,FROM_PREVIOUS_START,
JRM_SCI_PAR("SCI_I2_S3",18,1,18,"IDIS_SDIS","HSSL","ENABLE","DARK","DISABLE",0,38,20,5000,"LOW","LOW",
"POINT",-57343,20,5000,"LOW","LOW","SPIN",2137,"NO_SUMMED_SCI")
),
command(3,
SCHEDULED_TIME,\00:00:02\,FROM_PREVIOUS_START,
JRM_START_HS_REC()
),
command(4,
SCHEDULED_TIME,\00:00:02\,FROM_PREVIOUS_START,
JRM_SCIENCE()
),
command(5,
SCHEDULED_TIME,\00:09:50\,FROM_PREVIOUS_START,
JRM_ERROR_LOG()
),
command(6,
SCHEDULED_TIME,\00:00:02\,FROM_PREVIOUS_START,
JRM_STOP_HS_REC()
),
note(1,
SCHEDULED_TIME,\00:00:04\,FROM_PREVIOUS_START,
TEXT,\"South Pole\"
),
end;

request(JRM_073,

```


			JIR-IAPS-SY-006-2024	
			Issue	1.0
	JUNO/JIRAM		Page	45

```

START_TIME,2024-039T13:01:26.000,
TITLE, "jm0580_JRM_Science",
REQUESTOR, "JRMTEAM",
PROCESSOR, "VC2",
KEY, "No_Key")
command(1,
  SCHEDULED_TIME,\00:00:00\,FROM_REQUEST_START,
  JRM_SET_PAR(74,2490)
),
command(2,
  SCHEDULED_TIME,\00:00:02\,FROM_PREVIOUS_START,

JRM_SCI_PAR("SCI_I2_S3",18,1,18,"IDIS_SDIS","HSSL","ENABLE","DARK","DISABLE",0,38,20,5000,"LOW","LOW",
,"POINT",-57343,20,5000,"LOW","LOW","SPIN",2137,"NO_SUMMED_SCI")
),
command(3,
  SCHEDULED_TIME,\00:00:02\,FROM_PREVIOUS_START,
  JRM_START_HS_REC()
),
command(4,
  SCHEDULED_TIME,\00:00:02\,FROM_PREVIOUS_START,
  JRM_SCIENCE()
),
command(5,
  SCHEDULED_TIME,\00:09:50\,FROM_PREVIOUS_START,
  JRM_ERROR_LOG()
),
command(6,
  SCHEDULED_TIME,\00:00:02\,FROM_PREVIOUS_START,
  JRM_STOP_HS_REC()
),
note(1,
  SCHEDULED_TIME,\00:00:04\,FROM_PREVIOUS_START,
  TEXT,\"South Pole\"
),
end;

request(JRM_074,
  START_TIME,2024-039T13:11:36.000,
  TITLE, "jm0580_JRM_Science",
  REQUESTOR, "JRMTEAM",
  PROCESSOR, "VC2",
  KEY, "No_Key")
command(1,
  SCHEDULED_TIME,\00:00:00\,FROM_REQUEST_START,
  JRM_SET_PAR(74,2490)
),
command(2,
  SCHEDULED_TIME,\00:00:02\,FROM_PREVIOUS_START,

JRM_SCI_PAR("SCI_I2_S3",18,1,18,"IDIS_SDIS","HSSL","ENABLE","DARK","DISABLE",0,38,20,5000,"LOW","LOW",
,"POINT",-57343,20,5000,"LOW","LOW","SPIN",2137,"NO_SUMMED_SCI")
),
command(3,
  SCHEDULED_TIME,\00:00:02\,FROM_PREVIOUS_START,
  JRM_START_HS_REC()
),
command(4,
  SCHEDULED_TIME,\00:00:02\,FROM_PREVIOUS_START,
  JRM_SCIENCE()
),
command(5,
  SCHEDULED_TIME,\00:09:50\,FROM_PREVIOUS_START,
  JRM_ERROR_LOG()
),
command(6,
  SCHEDULED_TIME,\00:00:02\,FROM_PREVIOUS_START,
  JRM_STOP_HS_REC()
),
note(1,
  SCHEDULED_TIME,\00:00:04\,FROM_PREVIOUS_START,
  TEXT,\"South Pole\"
),

```

			JIR-IAPS-SY-006-2024	
			Issue	1.0
	JUNO/JIRAM		Page	46

```

end;

request (JRM_075,
        START_TIME,2024-039T13:21:38.000,
        TITLE, "jm0580_JRM-POWER_OFF",
        REQUESTOR, "JRMTEAM",
        PROCESSOR, "VC2",
        KEY, "No_Key")
    command(1,
            SCHEDULED_TIME,\00:00:00\,FROM_REQUEST_START,
            VM_LOAD(21,"d:/seq/hlfp_spm_safe_jiram.mod")
        ),
    note(1,
        SCHEDULED_TIME,\00:00:04\,FROM_PREVIOUS_START,
        TEXT,\"NaN\"
    ),
end;

request (JRM_076,
        START_TIME,2024-039T13:21:54.000,
        TITLE, "jm0580_JRM_Heater_Op",
        REQUESTOR, "JRMTEAM",
        PROCESSOR, "VC2",
        KEY, "No_Key")
    command(1,
            SCHEDULED_TIME,\00:00:00\,FROM_REQUEST_START,
            THRM_SET_PT_SEL("JIRAM_OH","NON_OPERATIONAL")
        ),
    command(2,
            SCHEDULED_TIME,\00:00:01\,FROM_PREVIOUS_START,
            THRM_SET_PT_SEL("JIRAM_DECON","NON_OPERATIONAL")
        ),
    command(3,
            SCHEDULED_TIME,\00:00:02\,FROM_PREVIOUS_START,
            THRM_SET_PT_SEL("JIRAM_ELECT_BP","NON_OPERATIONAL")
        ),
    note(1,
        SCHEDULED_TIME,\00:00:04\,FROM_PREVIOUS_START,
        TEXT,\"NaN\"
    ),
end;

request (JRM_077,
        START_TIME,2024-040T06:55:57.000,
        TITLE, "jm0580_JRM_Heater_Op",
        REQUESTOR, "JRMTEAM",
        PROCESSOR, "VC2",
        KEY, "No_Key")
    command(1,
            SCHEDULED_TIME,\00:00:00\,FROM_REQUEST_START,
            THRM_SET_PT_SEL("JIRAM_OH","OPERATIONAL")
        ),
    command(2,
            SCHEDULED_TIME,\00:00:01\,FROM_PREVIOUS_START,
            THRM_SET_PT_SEL("JIRAM_DECON","OPERATIONAL")
        ),
    command(3,
            SCHEDULED_TIME,\03:10:00\,FROM_PREVIOUS_START,
            THRM_SET_PT_SEL("JIRAM_ELECT_BP","OPERATIONAL")
        ),
    note(1,
        SCHEDULED_TIME,\00:00:04\,FROM_PREVIOUS_START,
        TEXT,\"NaN\"
    ),
end;

request (JRM_078,
        START_TIME,2024-040T12:16:57.000,
        TITLE, "jm0580_JRM-POWER_ON",
        REQUESTOR, "JRMTEAM",
        PROCESSOR, "VC2",
        KEY, "No_Key")
    spawn(1,

```

			JIR-IAPS-SY-006-2024	
			Issue	1.0
	JUNO/JIRAM		Page	47

```

        SCHEDULED_TIME,\00:00:00\,FROM_REQUEST_START,
        REQ_ENGINE_ID,21,RT_on_board_block(jiram_pwr_on)
    ),
    note(1,
        SCHEDULED_TIME,\00:00:04\,FROM_PREVIOUS_START,
        TEXT,\"NaN\"
    ),
end;

request(JRM_079,
    START_TIME,2024-040T12:19:40.000,
    TITLE, "jm0580_JRM_StandBy",
    REQUESTOR, "JRMTEAM",
    PROCESSOR, "VC2",
    KEY, "No_Key")
command(1,
    SCHEDULED_TIME,\00:00:00\,FROM_REQUEST_START,
    JRM_SET_PAR(111,10)
),
command(2,
    SCHEDULED_TIME,\00:00:04\,FROM_PREVIOUS_START,
    JRM_STANDBY("ON","ON","OFF")
),
command(3,
    SCHEDULED_TIME,\00:00:04\,FROM_PREVIOUS_START,

JRM_SCI_PAR("SCI_I1_S3",120,1,10,"IDIS_SDIS","HSSL","ENABLE","DARK","DISABLE",0,956,2,150,"LOW","LOW",
", "POINT",-57343,2,150,"LOW","LOW","SPIN",0,"NO_SUMMED_SCI")
),
    note(1,
        SCHEDULED_TIME,\00:00:04\,FROM_PREVIOUS_START,
        TEXT,\"NaN\"
    ),
end;

request(JRM_080,
    START_TIME,2024-040T12:19:52.000,
    TITLE, "jm0580_JRM_Science",
    REQUESTOR, "JRMTEAM",
    PROCESSOR, "VC2",
    KEY, "No_Key")
command(1,
    SCHEDULED_TIME,\00:00:00\,FROM_REQUEST_START,
    JRM_SET_PAR(74,0)
),
command(2,
    SCHEDULED_TIME,\00:00:02\,FROM_PREVIOUS_START,

JRM_SCI_PAR("SCI_I1_S1",10,1,0,"IDIS_SDIS","HSSL","DISABLE","DARK","DISABLE",0,0,5000,5000,"LOW","LOW",
", "POINT",28672,5000,5000,"LOW","LOW","SPIN",57343,"NO_SUMMED_SCI")
),
command(3,
    SCHEDULED_TIME,\00:00:02\,FROM_PREVIOUS_START,
    JRM_START_HS_REC()
),
command(4,
    SCHEDULED_TIME,\00:00:02\,FROM_PREVIOUS_START,
    JRM_SCIENCE()
),
command(5,
    SCHEDULED_TIME,\00:05:45\,FROM_PREVIOUS_START,
    JRM_ERROR_LOG()
),
command(6,
    SCHEDULED_TIME,\00:00:02\,FROM_PREVIOUS_START,
    JRM_STOP_HS_REC()
),
    note(1,
        SCHEDULED_TIME,\00:00:04\,FROM_PREVIOUS_START,
        TEXT,\"Temperatures Test\"
    ),
end;

```

			JIR-IAPS-SY-006-2024	
			Issue	1.0
	JUNO/JIRAM		Page	48

```

request (JRM_081,
    START_TIME,2024-040T12:25:58.000,
    TITLE, "jm0580_JRM_Science",
    REQUESTOR, "JRMTEAM",
    PROCESSOR, "VC2",
    KEY, "No_Key")
    command(1,
        SCHEDULED_TIME,\00:00:00\,FROM_REQUEST_START,
        JRM_SET_PAR(74,0)
    ),
    command(2,
        SCHEDULED_TIME,\00:00:02\,FROM_PREVIOUS_START,

JRM_SCI_PAR("SCI_I1_S1",8,1,0,"IDIS_SDIS","HSSL","DISABLE","DARK","DISABLE",0,0,500,500,"LOW","LOW",
"POINT",28672,500,500,"LOW","LOW","SPIN",57343,"NO_SUMMED_SCI")
    ),
    command(3,
        SCHEDULED_TIME,\00:00:02\,FROM_PREVIOUS_START,
        JRM_START_HS_REC()
    ),
    command(4,
        SCHEDULED_TIME,\00:00:02\,FROM_PREVIOUS_START,
        JRM_SCIENCE()
    ),
    command(5,
        SCHEDULED_TIME,\00:04:44\,FROM_PREVIOUS_START,
        JRM_ERROR_LOG()
    ),
    command(6,
        SCHEDULED_TIME,\00:00:02\,FROM_PREVIOUS_START,
        JRM_STOP_HS_REC()
    ),
    note(1,
        SCHEDULED_TIME,\00:00:04\,FROM_PREVIOUS_START,
        TEXT,\"Temperatures Test\"
    ),
end;

request (JRM_082,
    START_TIME,2024-040T12:31:03.000,
    TITLE, "jm0580_JRM_Science",
    REQUESTOR, "JRMTEAM",
    PROCESSOR, "VC2",
    KEY, "No_Key")
    command(1,
        SCHEDULED_TIME,\00:00:00\,FROM_REQUEST_START,
        JRM_SET_PAR(74,0)
    ),
    command(2,
        SCHEDULED_TIME,\00:00:02\,FROM_PREVIOUS_START,

JRM_SCI_PAR("SCI_I1_S1",8,1,0,"IDIS_SDIS","HSSL","DISABLE","DARK","DISABLE",0,0,5000,5000,"LOW","LOW",
"POINT",28672,5000,5000,"LOW","LOW","SPIN",57343,"NO_SUMMED_SCI")
    ),
    command(3,
        SCHEDULED_TIME,\00:00:02\,FROM_PREVIOUS_START,
        JRM_START_HS_REC()
    ),
    command(4,
        SCHEDULED_TIME,\00:00:02\,FROM_PREVIOUS_START,
        JRM_SCIENCE()
    ),
    command(5,
        SCHEDULED_TIME,\00:04:44\,FROM_PREVIOUS_START,
        JRM_ERROR_LOG()
    ),
    command(6,
        SCHEDULED_TIME,\00:00:02\,FROM_PREVIOUS_START,
        JRM_STOP_HS_REC()
    ),
    note(1,
        SCHEDULED_TIME,\00:00:04\,FROM_PREVIOUS_START,
        TEXT,\"Temperatures Test\"
    )

```

			JIR-IAPS-SY-006-2024	
			Issue	1.0
	JUNO/JIRAM		Page	49

```

),
end;

request (JRM_083,
        START_TIME,2024-040T12:36:08.000,
        TITLE, "jm0580_JRM_Science",
        REQUESTOR, "JRMTEAM",
        PROCESSOR, "VC2",
        KEY, "No_Key")
    command(1,
            SCHEDULED_TIME,\00:00:00\,FROM_REQUEST_START,
            JRM_SET_PAR(74,0)
        ),
    command(2,
            SCHEDULED_TIME,\00:00:02\,FROM_PREVIOUS_START,
            JRM_SCI_PAR("SCI_I1_S1",8,1,0,"IDIS_SDIS","HSSL","DISABLE","DARK","DISABLE",0,0,500,500,"LOW","LOW",
            "POINT",28672,500,500,"LOW","LOW","SPIN",57343,"NO_SUMMED_SCI")
        ),
    command(3,
            SCHEDULED_TIME,\00:00:02\,FROM_PREVIOUS_START,
            JRM_START_HS_REC()
        ),
    command(4,
            SCHEDULED_TIME,\00:00:02\,FROM_PREVIOUS_START,
            JRM_SCIENCE()
        ),
    command(5,
            SCHEDULED_TIME,\00:04:44\,FROM_PREVIOUS_START,
            JRM_ERROR_LOG()
        ),
    command(6,
            SCHEDULED_TIME,\00:00:02\,FROM_PREVIOUS_START,
            JRM_STOP_HS_REC()
        ),
    note(1,
            SCHEDULED_TIME,\00:00:04\,FROM_PREVIOUS_START,
            TEXT,\"Temperatures Test\"
        ),
end;

request (JRM_084,
        START_TIME,2024-040T12:41:13.000,
        TITLE, "jm0580_JRM_Science",
        REQUESTOR, "JRMTEAM",
        PROCESSOR, "VC2",
        KEY, "No_Key")
    command(1,
            SCHEDULED_TIME,\00:00:00\,FROM_REQUEST_START,
            JRM_SET_PAR(74,0)
        ),
    command(2,
            SCHEDULED_TIME,\00:00:02\,FROM_PREVIOUS_START,
            JRM_SCI_PAR("SCI_I1_S1",8,1,0,"IDIS_SDIS","HSSL","DISABLE","DARK","DISABLE",0,0,5000,5000,"LOW","LOW",
            "POINT",28672,5000,5000,"LOW","LOW","SPIN",57343,"NO_SUMMED_SCI")
        ),
    command(3,
            SCHEDULED_TIME,\00:00:02\,FROM_PREVIOUS_START,
            JRM_START_HS_REC()
        ),
    command(4,
            SCHEDULED_TIME,\00:00:02\,FROM_PREVIOUS_START,
            JRM_SCIENCE()
        ),
    command(5,
            SCHEDULED_TIME,\00:04:44\,FROM_PREVIOUS_START,
            JRM_ERROR_LOG()
        ),
    command(6,
            SCHEDULED_TIME,\00:00:02\,FROM_PREVIOUS_START,
            JRM_STOP_HS_REC()
        ),
),

```

			JIR-IAPS-SY-006-2024	
			Issue	1.0
	JUNO/JIRAM		Page	50

```

note(1,
    SCHEDULED_TIME,\00:00:04\,FROM_PREVIOUS_START,
    TEXT,\"Temperatures Test\"
),
end;

request(JRM_085,
    START_TIME,2024-040T12:46:18.000,
    TITLE,\"jm0580_JRM_Science\",
    REQUESTOR,\"JRMTEAM\",
    PROCESSOR,\"VC2\",
    KEY,\"No_Key\")
command(1,
    SCHEDULED_TIME,\00:00:00\,FROM_REQUEST_START,
    JRM_SET_PAR(74,0)
),
command(2,
    SCHEDULED_TIME,\00:00:02\,FROM_PREVIOUS_START,
    JRM_SCI_PAR(\"SCI_I1_S1\",8,1,0,\"IDIS_SDIS\",\"HSSL\",\"DISABLE\",\"DARK\",\"DISABLE\",0,0,500,500,\"LOW\",\"LOW\",
    \"POINT\",28672,500,500,\"LOW\",\"LOW\",\"SPIN\",57343,\"NO_SUMMED_SCI\")
),
command(3,
    SCHEDULED_TIME,\00:00:02\,FROM_PREVIOUS_START,
    JRM_START_HS_REC()
),
command(4,
    SCHEDULED_TIME,\00:00:02\,FROM_PREVIOUS_START,
    JRM_SCIENCE()
),
command(5,
    SCHEDULED_TIME,\00:04:44\,FROM_PREVIOUS_START,
    JRM_ERROR_LOG()
),
command(6,
    SCHEDULED_TIME,\00:00:02\,FROM_PREVIOUS_START,
    JRM_STOP_HS_REC()
),
note(1,
    SCHEDULED_TIME,\00:00:04\,FROM_PREVIOUS_START,
    TEXT,\"Temperatures Test\"
),
end;

request(JRM_086,
    START_TIME,2024-040T12:51:23.000,
    TITLE,\"jm0580_JRM_Science\",
    REQUESTOR,\"JRMTEAM\",
    PROCESSOR,\"VC2\",
    KEY,\"No_Key\")
command(1,
    SCHEDULED_TIME,\00:00:00\,FROM_REQUEST_START,
    JRM_SET_PAR(74,0)
),
command(2,
    SCHEDULED_TIME,\00:00:02\,FROM_PREVIOUS_START,
    JRM_SCI_PAR(\"SCI_I1_S1\",8,1,0,\"IDIS_SDIS\",\"HSSL\",\"DISABLE\",\"DARK\",\"DISABLE\",0,0,5000,5000,\"LOW\",\"LOW\",
    \"POINT\",28672,5000,5000,\"LOW\",\"LOW\",\"SPIN\",57343,\"NO_SUMMED_SCI\")
),
command(3,
    SCHEDULED_TIME,\00:00:02\,FROM_PREVIOUS_START,
    JRM_START_HS_REC()
),
command(4,
    SCHEDULED_TIME,\00:00:02\,FROM_PREVIOUS_START,
    JRM_SCIENCE()
),
command(5,
    SCHEDULED_TIME,\00:04:44\,FROM_PREVIOUS_START,
    JRM_ERROR_LOG()
),
command(6,

```

			JIR-IAPS-SY-006-2024	
			Issue	1.0
	JUNO/JIRAM		Page	51

```

        SCHEDULED_TIME,\00:00:02\,FROM_PREVIOUS_START,
        JRM_STOP_HS_REC()
    ),
    note(1,
        SCHEDULED_TIME,\00:00:04\,FROM_PREVIOUS_START,
        TEXT,\"Temperatures Test\"
    ),
end;

request(JRM_087,
    START_TIME,2024-040T12:56:28.000,
    TITLE, "jm0580_JRM_Science",
    REQUESTOR, "JRMTEAM",
    PROCESSOR, "VC2",
    KEY, "No_Key")
command(1,
    SCHEDULED_TIME,\00:00:00\,FROM_REQUEST_START,
    JRM_SET_PAR(74,0)
),
command(2,
    SCHEDULED_TIME,\00:00:02\,FROM_PREVIOUS_START,
    JRM_SCI_PAR("SCI_I1_S1",8,1,0,"IDIS_SDIS","HSSL","DISABLE","DARK","DISABLE",0,0,500,500,"LOW","LOW",
    "POINT",28672,500,500,"LOW","LOW","SPIN",57343,"NO_SUMMED_SCI")
),
command(3,
    SCHEDULED_TIME,\00:00:02\,FROM_PREVIOUS_START,
    JRM_START_HS_REC()
),
command(4,
    SCHEDULED_TIME,\00:00:02\,FROM_PREVIOUS_START,
    JRM_SCIENCE()
),
command(5,
    SCHEDULED_TIME,\00:04:44\,FROM_PREVIOUS_START,
    JRM_ERROR_LOG()
),
command(6,
    SCHEDULED_TIME,\00:00:02\,FROM_PREVIOUS_START,
    JRM_STOP_HS_REC()
),
    note(1,
        SCHEDULED_TIME,\00:00:04\,FROM_PREVIOUS_START,
        TEXT,\"Temperatures Test\"
    ),
end;

request(JRM_088,
    START_TIME,2024-040T13:01:33.000,
    TITLE, "jm0580_JRM_Science",
    REQUESTOR, "JRMTEAM",
    PROCESSOR, "VC2",
    KEY, "No_Key")
command(1,
    SCHEDULED_TIME,\00:00:00\,FROM_REQUEST_START,
    JRM_SET_PAR(74,0)
),
command(2,
    SCHEDULED_TIME,\00:00:02\,FROM_PREVIOUS_START,
    JRM_SCI_PAR("SCI_I1_S1",8,1,0,"IDIS_SDIS","HSSL","DISABLE","DARK","DISABLE",0,0,5000,5000,"LOW","LOW",
    "POINT",28672,5000,5000,"LOW","LOW","SPIN",57343,"NO_SUMMED_SCI")
),
command(3,
    SCHEDULED_TIME,\00:00:02\,FROM_PREVIOUS_START,
    JRM_START_HS_REC()
),
command(4,
    SCHEDULED_TIME,\00:00:02\,FROM_PREVIOUS_START,
    JRM_SCIENCE()
),
command(5,
    SCHEDULED_TIME,\00:04:44\,FROM_PREVIOUS_START,

```


			JIR-IAPS-SY-006-2024	
			Issue	1.0
	JUNO/JIRAM		Page	52

```

        JRM_ERROR_LOG()
    ),
    command(6,
        SCHEDULED_TIME,\00:00:02\,FROM_PREVIOUS_START,
        JRM_STOP_HS_REC()
    ),
    note(1,
        SCHEDULED_TIME,\00:00:04\,FROM_PREVIOUS_START,
        TEXT,\"Temperatures Test\"
    ),
end;

request(JRM_089,
    START_TIME,2024-040T13:06:38.000,
    TITLE, "jm0580_JRM_Science",
    REQUESTOR, "JRMTEAM",
    PROCESSOR, "VC2",
    KEY, "No_Key")
    command(1,
        SCHEDULED_TIME,\00:00:00\,FROM_REQUEST_START,
        JRM_SET_PAR(74,0)
    ),
    command(2,
        SCHEDULED_TIME,\00:00:02\,FROM_PREVIOUS_START,
        JRM_SCI_PAR("SCI_I1_S1",8,1,0,"IDIS_SDIS","HSSL","DISABLE","DARK","DISABLE",0,0,500,500,"LOW","LOW",
        "POINT",28672,500,500,"LOW","LOW","SPIN",57343,"NO_SUMMED_SCI")
    ),
    command(3,
        SCHEDULED_TIME,\00:00:02\,FROM_PREVIOUS_START,
        JRM_START_HS_REC()
    ),
    command(4,
        SCHEDULED_TIME,\00:00:02\,FROM_PREVIOUS_START,
        JRM_SCIENCE()
    ),
    command(5,
        SCHEDULED_TIME,\00:04:44\,FROM_PREVIOUS_START,
        JRM_ERROR_LOG()
    ),
    command(6,
        SCHEDULED_TIME,\00:00:02\,FROM_PREVIOUS_START,
        JRM_STOP_HS_REC()
    ),
    note(1,
        SCHEDULED_TIME,\00:00:04\,FROM_PREVIOUS_START,
        TEXT,\"Temperatures Test\"
    ),
end;

request(JRM_090,
    START_TIME,2024-040T13:11:43.000,
    TITLE, "jm0580_JRM_Science",
    REQUESTOR, "JRMTEAM",
    PROCESSOR, "VC2",
    KEY, "No_Key")
    command(1,
        SCHEDULED_TIME,\00:00:00\,FROM_REQUEST_START,
        JRM_SET_PAR(74,0)
    ),
    command(2,
        SCHEDULED_TIME,\00:00:02\,FROM_PREVIOUS_START,
        JRM_SCI_PAR("SCI_I1_S1",8,1,0,"IDIS_SDIS","HSSL","DISABLE","DARK","DISABLE",0,0,5000,5000,"LOW","LOW",
        "POINT",28672,5000,5000,"LOW","LOW","SPIN",57343,"NO_SUMMED_SCI")
    ),
    command(3,
        SCHEDULED_TIME,\00:00:02\,FROM_PREVIOUS_START,
        JRM_START_HS_REC()
    ),
    command(4,
        SCHEDULED_TIME,\00:00:02\,FROM_PREVIOUS_START,
        JRM_SCIENCE()
    )

```

			JIR-IAPS-SY-006-2024	
			Issue	1.0
	JUNO/JIRAM		Page	53

```

),
command(5,
    SCHEDULED_TIME,\00:04:44\,FROM_PREVIOUS_START,
    JRM_ERROR_LOG()
),
command(6,
    SCHEDULED_TIME,\00:00:02\,FROM_PREVIOUS_START,
    JRM_STOP_HS_REC()
),
note(1,
    SCHEDULED_TIME,\00:00:04\,FROM_PREVIOUS_START,
    TEXT,\"Temperatures Test\"
),
end;

request(JRM_091,
    START_TIME,2024-040T13:16:48.000,
    TITLE, "jm0580_JRM_Science",
    REQUESTOR, "JRMTEAM",
    PROCESSOR, "VC2",
    KEY, "No_Key")
command(1,
    SCHEDULED_TIME,\00:00:00\,FROM_REQUEST_START,
    JRM_SET_PAR(74,0)
),
command(2,
    SCHEDULED_TIME,\00:00:02\,FROM_PREVIOUS_START,
    JRM_SCI_PAR("SCI_I1_S1",8,1,0,"IDIS_SDIS","HSSL","DISABLE","DARK","DISABLE",0,0,500,500,"LOW","LOW",
    "POINT",28672,500,500,"LOW","LOW","SPIN",57343,"NO_SUMMED_SCI")
),
command(3,
    SCHEDULED_TIME,\00:00:02\,FROM_PREVIOUS_START,
    JRM_START_HS_REC()
),
command(4,
    SCHEDULED_TIME,\00:00:02\,FROM_PREVIOUS_START,
    JRM_SCIENCE()
),
command(5,
    SCHEDULED_TIME,\00:04:44\,FROM_PREVIOUS_START,
    JRM_ERROR_LOG()
),
command(6,
    SCHEDULED_TIME,\00:00:02\,FROM_PREVIOUS_START,
    JRM_STOP_HS_REC()
),
note(1,
    SCHEDULED_TIME,\00:00:04\,FROM_PREVIOUS_START,
    TEXT,\"Temperatures Test\"
),
end;

request(JRM_092,
    START_TIME,2024-040T13:21:44.000,
    TITLE, "jm0580_JRM-POWER_OFF",
    REQUESTOR, "JRMTEAM",
    PROCESSOR, "VC2",
    KEY, "No_Key")
command(1,
    SCHEDULED_TIME,\00:00:00\,FROM_REQUEST_START,
    VM_LOAD(21,\"d:/seq/hlfp_spm_safe_jiram.mod")
),
note(1,
    SCHEDULED_TIME,\00:00:04\,FROM_PREVIOUS_START,
    TEXT,\"NaN\"
),
end;

request(JRM_093,
    START_TIME,2024-040T13:22:00.000,
    TITLE, "jm0580_JRM_Heater_Op",
    REQUESTOR, "JRMTEAM",

```

			JIR-IAPS-SY-006-2024	
			Issue	1.0
	JUNO/JIRAM		Page	54

```

PROCESSOR, "VC2",
KEY, "No_Key")
command(1,
SCHEDULED_TIME,\00:00:00\,FROM_REQUEST_START,
THRM_SET_PT_SEL("JIRAM_OH","NON_OPERATIONAL")
),
command(2,
SCHEDULED_TIME,\00:00:01\,FROM_PREVIOUS_START,
THRM_SET_PT_SEL("JIRAM_DECON","NON_OPERATIONAL")
),
command(3,
SCHEDULED_TIME,\00:00:02\,FROM_PREVIOUS_START,
THRM_SET_PT_SEL("JIRAM_ELECT_BF","NON_OPERATIONAL")
),
end;
$$EOF

```